

Active Recombinant Mouse PRLR Homodimer Protein, His&Avi tagged

Cat. No. Prlr-55M Lot. No. (See product label)

SPECIFICATION

Product Overview	Mouse PRLR protein dimer contains a PRLR extracellular domain (UniProt# Q08501) fused with a proprietary cis-dimer motif followed by a His tag at the C-terminus was expressed in HEK293T.
Species	Mouse
Source	HEK293T
ProteinLength	20-229 aa
Description	<p>Prolactin receptor (PRLR), also known as PRL-R, is a class 1 cytokine receptor glycoprotein that binds prolactin (PRL). PRLR contains an extracellular domain with a cytokine homology module formed by two fibronectin type III domains, D1 and D2, followed by a transmembrane domain and cytoplasmic domain. PRLR is expressed on cells in mammary glands, pituitary gland, and other tissues. PRLR exists as a monomer and can form dimers. PRLR dimerization is a critical mechanism in PRL signaling, influencing numerous physiological and pathological processes. PRLR pathological dimerization, including constitutive or ligand-independent PRLR dimers sustain abnormal signaling, contributes to cancer, hyperprolactinemia, and immune dysfunction. Dysregulation of PRLR can promote tumor activity and positively regulate the proliferation of malignant cells in breast cancer. PRLR is an attractive therapeutic target for PRLR related diseases including breast cancer, hyperprolactinemia, and metabolic disorders. While structurally and functionally</p>

 Tel: 1-631-559-9269 1-516-512-3133

 Email: info@creative-biomart.com  Fax: 1-631-938-8127

 45-1 Ramsey Road, Shirley, NY 11967, USA

similar to human PRLR, mouse PRLR is a species-specific tool essential for preclinical studies, basic research, and translational research in cancer immunotherapy.

Molecular Mass	65 kDa
Purity	Greater than 90% dimer form as determined by SDS-PAGE under non-reducing condition
Application	Verified Applications: ELISA for PRLR-specific antibody binding assays. Suggested Applications: ELISA for PRLR and prolactin (PRL) ligand protein binding assays. SPR & BLI for PRLR-specific antibody and PRL protein binding assays. Animal immunization, RUO.
Storage	Store at -80 centigrade.
Storage Buffer	0.22µm filtered PBS, pH 7.4
Shipping	Frozen Dry Ice

GENE INFORMATION

Gene Name	Prlr prolactin receptor [Mus musculus (house mouse)]
Official Symbol	Prlr
Synonyms	PRLR; prolactin receptor; PRL-R; prolactin receptor related sequence 1; Pr-1; Pr-3; AI987712; Prlr-rs1;
Gene ID	19116

 Tel: 1-631-559-9269 1-516-512-3133

 Email: info@creative-biomart.com  Fax: 1-631-938-8127

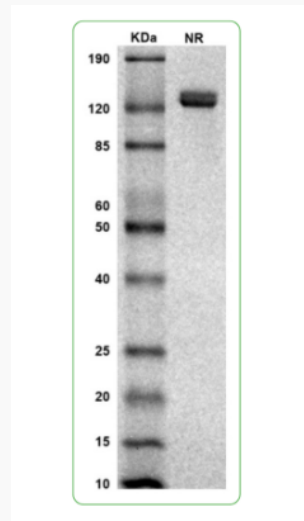
 45-1 Ramsey Road, Shirley, NY 11967, USA

mRNA Refseq [NM_001253781](#)

Protein Refseq [NP_001240710](#)

UniProt ID [Q08501](#)

SDS-PAGE and WB



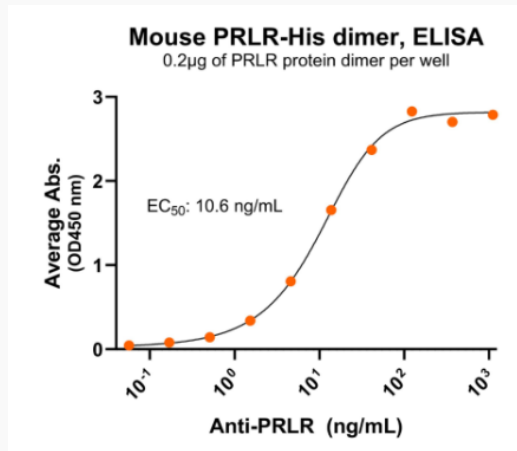
MW: Molecular Weight marker reduced condition NR: PRLR dimer under non-reduced condition

 Tel: 1-631-559-9269 1-516-512-3133

 Email: info@creative-biomart.com  Fax: 1-631-938-8127

 45-1 Ramsey Road, Shirley, NY 11967, USA

**Bioactivity-Antibody
Binding**



Immobilized mouse PRLR protein dimer, His-tag at 2 µg/mL (100 µL/well) can bind anti-mouse PRLR monoclonal antibody with half maximal effective concentration (EC₅₀) range of 5.3-21.2 ng/mL (QC tested).

Tel: 1-631-559-9269 1-516-512-3133

Email: info@creative-biomart.com Fax: 1-631-938-8127

45-1 Ramsey Road, Shirley, NY 11967, USA