

Recombinant Mouse Prlr protein, His-tagged

Cat. No. Prlr-7395M **Lot. No.** (See product label)

SPECIFICATION

Product Overview	Recombinant Mouse Prlr protein(Q08501-1)(Gln20-Asp229), fused with C-terminal His tag, was expressed in HEK293.
Species	Mouse
Source	HEK293
ProteinLength	Gln20-Asp229
Tag	C-His
Form	Supplied as 0.22µm filtered solution in PBS (pH 7.4).
Molecular Mass	The protein has a predicted MW of 25.7 kDa. Due to glycosylation, the protein migrates to 38-45 kDa based on Tris-Bis PAGE result.
Endotoxin	Less than 1EU per µg by the LAL method.
Purity	> 95% as determined by Tris-Bis PAGE;> 95% as determined by HPLC
Storage	Valid for 12 months from date of receipt when stored at -80°C. Recommend to aliquot the protein into smaller quantities for optimal storage. Please do not repeated freeze-thaw cycles.
Reconstitution	It is recommended that sterile water be added to the vial to prepare a stock solution of

 Tel: 1-631-559-9269 1-516-512-3133

 Email: info@creative-biomart.com  Fax: 1-631-938-8127

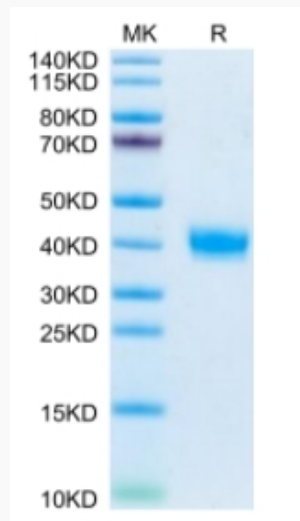
 45-1 Ramsey Road, Shirley, NY 11967, USA

0.2 ug/ul. Centrifuge the vial at 4°C before opening to recover the entire contents.

GENE INFORMATION

Gene Name	Prlr prolactin receptor [<i>Mus musculus</i>]
Official Symbol	Prlr
Synonyms	PRLR; prolactin receptor; PRL-R; prolactin receptor related sequence 1; Pr-1; Pr-3; AI987712; Prlr-rs1;
Gene ID	19116
mRNA Refseq	NM_001253781
Protein Refseq	NP_001240710

Tris-Bis PAGE



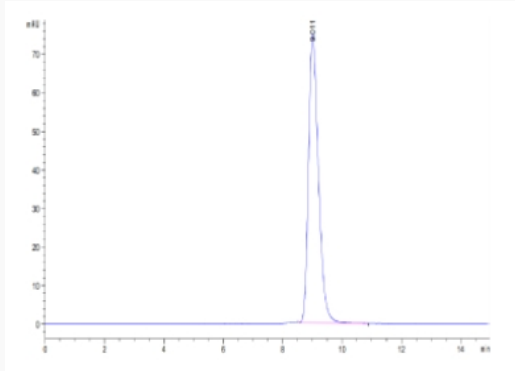
 Tel: 1-631-559-9269 1-516-512-3133

 Email: info@creative-biomart.com  Fax: 1-631-938-8127

 45-1 Ramsey Road, Shirley, NY 11967, USA



SEC-HPLC



Tel: 1-631-559-9269 1-516-512-3133

Email: info@creative-biomart.com Fax: 1-631-938-8127

45-1 Ramsey Road, Shirley, NY 11967, USA