

# Recombinant Rat Protein Arginine Methyltransferase 1

**Cat. No.** Prmt1-711R    **Lot. No.** (See product label)

## SPECIFICATION

<b>Product Overview</b>	Recombinant Rat protein arginine methyltransferase 1 was expressed in <i>E. Coli</i> .
<b>Species</b>	Rat
<b>Source</b>	E.coli
<b>Description</b>	<p>PRMT1 is the predominant member of the methyl transferases, which catalyzes the protein arginine N-methylation reactions. PRMT1 is implicated in various cellular processes including: transcription, RNA processing, and signal transduction. The N-methyltransferase activity is determined by detecting the level of radiolabel transfer from 3H-AdoMet (Methyl donor) to histone, which is arginine rich (methyl acceptor). Actions Methyl transferases catalyze the addition of methyl groups to nitrogen, carbon, sulfur, and oxygen atoms of small molecules, lipids, proteins, and nucleic acids. Eight mammalian protein arginine methyltransferases (PRMT) have been identified.</p>
<b>Unit Definition</b>	The specific activity is $\geq 0.1$ nmol/mgP/min. measured by 3H-AdoMet incorporation into histone for 30 minutes at 30°C.
<b>Physical Form</b>	Solution of 50 mM Tris, pH 7.6, 5 mM DTT, 0.2% IGEPAL® CA-630, 150 mM NaCl, and 30% glycerol (w/v).
<b>Legal Information</b>	IGEPAL is a registered trademark of Rhodia Operations.
<b>Assay</b>	$\geq 90\%$ (SDS-PAGE).

 Tel: 1-631-559-9269    1-516-512-3133

 Email: [info@creative-biomart.com](mailto:info@creative-biomart.com)     Fax: 1-631-938-8127

 45-1 Ramsey Road, Shirley, NY 11967, USA

<b>Form</b>	Buffered aqueous solution.
<b>Shipped in</b>	Dry ice.
<b>Storage temp</b>	-20°C.
<b>Personal Protective Equipment</b>	Eyeshields,Gloves,half-mask respirator (EU),half-mask respirator (US),multi-purpose combination r espirator cartridge (US).

## GENE INFORMATION

<b>Gene Name</b>	Prmt1 protein arginine methyltransferase 1 [ Rattus norvegicus ]
<b>Synonyms</b>	Prmt1; protein arginine methyltransferase 1; Hrmt1I2; protein arginine N- methyltransferase 1; heterogeneous nuclear ribonucleoproteins methyltransferase- like 2
<b>Gene ID</b>	60421
<b>mRNA Refseq</b>	NM_024363
<b>Protein Refseq</b>	NP_077339
<b>UniProt ID</b>	Q63009
<b>Chromosome Location</b>	1q22
<b>Function</b>	S-adenosylmethionine-dependent methyltransferase activity; [cytochrome c]-arginine N-methyltransferase activity; histone-arginine N-methyltransferase activity; protein binding; protein methyltransferase activity; protein methyltransferase activity; protein-

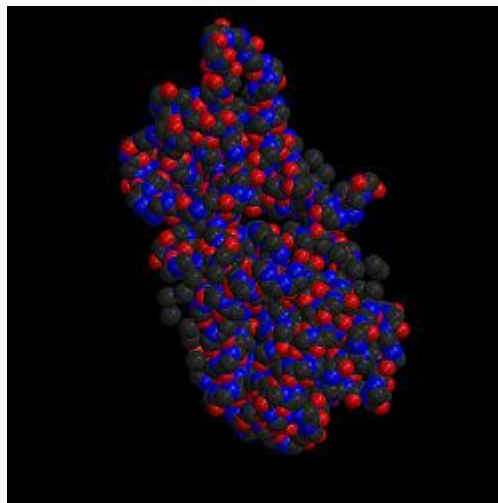
 Tel: 1-631-559-9269 1-516-512-3133


 Email: [info@creative-biomart.com](mailto:info@creative-biomart.com)  Fax: 1-631-938-8127

 45-1 Ramsey Road, Shirley, NY 11967, USA


arginine omega-N asymmetric methyltransferase activity; protein-arginine omega-N monomethyltransferase activity; snoRNP binding; transferase activity

PDB rendering based  
on 1or8.



 Tel: 1-631-559-9269 1-516-512-3133

 Email: [info@creative-biomart.com](mailto:info@creative-biomart.com)  Fax: 1-631-938-8127

 45-1 Ramsey Road, Shirley, NY 11967, USA