

Recombinant Mouse Procr protein, His-tagged

Cat. No. Procr-590M **Lot. No.** (See product label)

SPECIFICATION

Product Overview	Recombinant Mouse Procr (Q64695) aa. (Ile32~Phe167) fused with N-terminal His tag was produced in E. coli cells.
Species	Mouse
Source	E.coli
ProteinLength	Ile32~Phe167
Form	Freeze-dried powder
Molecular Mass	19kDa as determined by SDS-PAGE reducing conditions
Endotoxin	<1.0EU per 1g (determined by the LAL method)
Purity	> 95%
Characteristic	The isoelectric point is 5.6.
Applications	SDS-PAGE; WB; ELISA; IP.
Stability	The thermal stability is described by the loss rate. The loss rate was determined by accelerated thermal degradation test, that is, incubate the protein at 37°C for 48h, and no obvious degradation and precipitation were observed. The loss rate is less than 5% within the expiration date under appropriate storage condition.

 Tel: 1-631-559-9269 1-516-512-3133

 Email: info@creative-biomart.com  Fax: 1-631-938-8127

 45-1 Ramsey Road, Shirley, NY 11967, USA

Storage	Avoid repeated freeze/thaw cycles. Store at 2-8°C for one month. Aliquot and store at -80°C for 12 months.
Storage buffer	PBS, pH7.4, containing 5% sucrose, 0.01% sarcosyl.
Reconstitution	Reconstitute in sterile PBS, pH7.2-pH7.4

GENE INFORMATION

Gene Name	Procr protein C receptor, endothelial [<i>Mus musculus</i> (house mouse)]
Official Symbol	Procr
Synonyms	Procr; protein C receptor, endothelial; Ccca; Epcr; Ccd41; AI325044; endothelial protein C receptor; APC receptor; CD antigen CD201; activated protein C receptor; centrocyclin; centrosomal protein CCD41; endothelial cell protein C receptor
Gene ID	19124
mRNA Refseq	NM_011171.2
Protein Refseq	NP_035301.2
UniProt ID	Q64695

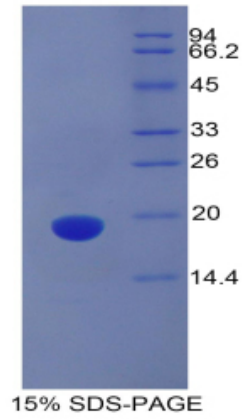
 Tel: 1-631-559-9269 1-516-512-3133

 Email: info@creative-biomart.com  Fax: 1-631-938-8127

 45-1 Ramsey Road, Shirley, NY 11967, USA



SDS-PAGE



Tel: 1-631-559-9269 1-516-512-3133

Email: info@creative-biomart.com Fax: 1-631-938-8127

45-1 Ramsey Road, Shirley, NY 11967, USA