

## Recombinant Human Proinsulin

Cat. No. Proinsulin-01H Lot. No. (See product label)

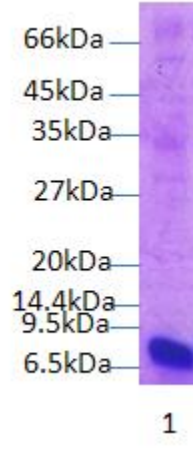
### SPECIFICATION

<b>Product Overview</b>	Recombinant Human Proinsulin was expressed in <i>Pichia pastoris</i> .
<b>Species</b>	Human
<b>Source</b>	<i>P.pastoris</i>
<b>Description</b>	Proinsulin is the prohormone precursor to insulin made in the beta cells of the islets of Langerhans, specialized regions of the pancreas. In humans, proinsulin is encoded by the INS gene.
<b>Form</b>	20mM Tris, 3mM EDTA, pH 8.5
<b>Molecular Mass</b>	7044Da
<b>Purity</b>	>90%, as determined by SDS-PAGE and HPLC
<b>Storage</b>	Store at -20°C.

 Tel: 1-631-559-9269 1-516-512-3133

 Email: [info@creative-biomart.com](mailto:info@creative-biomart.com)  Fax: 1-631-938-8127

 45-1 Ramsey Road, Shirley, NY 11967, USA



Tel: 1-631-559-9269 1-516-512-3133

Email: [info@creative-biomart.com](mailto:info@creative-biomart.com) Fax: 1-631-938-8127

45-1 Ramsey Road, Shirley, NY 11967, USA