

## Recombinant Mouse Proinsulin (25-108aa)

**Cat. No.** Proinsulln-01M    **Lot. No.** (See product label)

### SPECIFICATION

<b>Product Overview</b>	Recombinant Mouse Proinsulin (25-108aa) was produced without tag.
<b>Species</b>	Mouse
<b>ProteinLength</b>	25-108aa
<b>Description</b>	This gene encodes insulin, a peptide hormone that plays a vital role in the regulation of carbohydrate and lipid metabolism. The encoded precursor protein undergoes proteolytic cleavage to produce a disulfide-linked heterodimeric functional protein that is stored in secretory granules. An increase in blood glucose levels, among others, induces the release of insulin from the secretory granules. Mice deficient in the functional hormone encoded by this gene develop diabetes mellitus.
<b>Form</b>	Lyophilized powder
<b>Molecular Mass</b>	(Theoretical molecular weight)~ 9.5 kDa
<b>AA Sequence</b>	FVKQHLCGPHLVEALYLVCGERGFFYTPKSRREVEDPQVEQLELGGSPGDLQTLAL EVARQKRGIVDQCCTSICSLYQLENYCN
<b>Purity</b>	> 90% as determined by SDS-PAGE
<b>Storage</b>	Short Term Storage at +4 centigrade, Long Term, please prepare aliquots with 20% glycerol and store at -20 to -80 centigrade. Avoid freeze/thaw cycles.

 Tel: 1-631-559-9269    1-516-512-3133

 Email: [info@creative-biomart.com](mailto:info@creative-biomart.com)     Fax: 1-631-938-8127

 45-1 Ramsey Road, Shirley, NY 11967, USA

**Storage Buffer**                      PBS, pH7.4, with 5% mannitol and 5% trehalose.

## GENE INFORMATION

**Gene Name**                              *Ins1 insulin I [ Mus musculus (house mouse) ]*

**Official Symbol**                        *Ins1*

**Synonyms**                                *Ins1; insulin I; Ins-1; Ins2-rs1; insulin-1; Proinsulin*

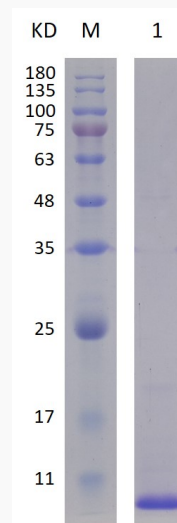
**Gene ID**                                    16333

**mRNA Refseq**                            [NM\\_008386](#)

**Protein Refseq**                            [NP\\_032412](#)

**UniProt ID**                                 [P01325](#)

**12% SDS-PAGE  
analysis profiles of  
purified mouse  
proinsulin (CBB  
stained)**



 Tel: 1-631-559-9269    1-516-512-3133

 Email: [info@creative-biomart.com](mailto:info@creative-biomart.com)     Fax: 1-631-938-8127

 45-1 Ramsey Road, Shirley, NY 11967, USA



Lane M: Protein Marker

Lane 1: Elution

 Tel: 1-631-559-9269 1-516-512-3133

 Email: [info@creative-biomart.com](mailto:info@creative-biomart.com)  Fax: 1-631-938-8127

 45-1 Ramsey Road, Shirley, NY 11967, USA