

Recombinant Tobacco etch virus Protease protein

Cat. No. Protease-68T **Lot. No.** (See product label)

SPECIFICATION

Product Overview	Recombinant Tobacco etch virus Protease protein (2038-2273 aa, S219V)-5R) without tag was expressed in E. coli.
Species	Tobacco etch virus
Source	E.coli
ProteinLength	2038-2273 aa, (S219V)-5R
Description	Protease is an enzyme that catalyzes the hydrolysis of peptide bonds within proteins. Nearly 2% of the proteins encoded by the human genome are proteases, making up one of the largest classes of enzymes.
Molecular Mass	28.6 KDa
Bio-activity	Specific activity: > 4000 U/mg
Note	For complete recovery, mix well and spin before use. Product must not be store in diluted solutions. Aliquots below 10ul are not advisable. Avoid repetitive freeze-thaw cycles!
Storage	Store at -80 centigrade.
Storage Buffer	50mM Tris-HCl (pH7.5), 200mM NaCl, 20%glycerol, 1mM DTT

 Tel: 1-631-559-9269 1-516-512-3133

 Email: info@creative-biomart.com  Fax: 1-631-938-8127

 45-1 Ramsey Road, Shirley, NY 11967, USA

Concentration 5.88 mg/mL

GENE INFORMATION

Gene Name TEVgp1 polyprotein [Tobacco etch virus]

Official Symbol TEVgp1

Synonyms TEVgp1; polyprotein; polyprotein; 6K2 protein; Nla-VPg protein; NIb protein; coat protein; P1 protein; HC-Pro protein; P3 protein; 6K1 protein; CI protein; Nla-Pro protein

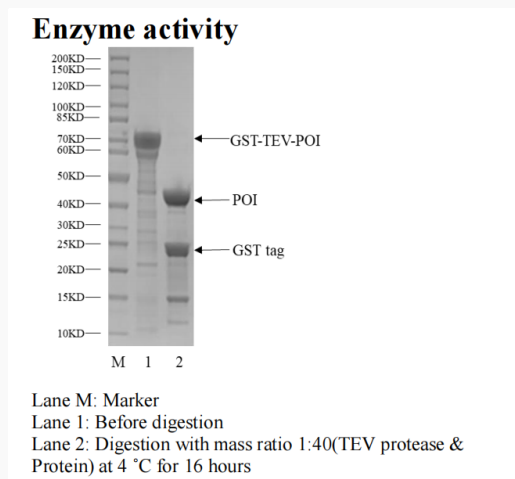
Gene ID 1502321

Protein Refseq NP_062908

UniProt ID P04517

SDS-PAGE

Enzyme activity

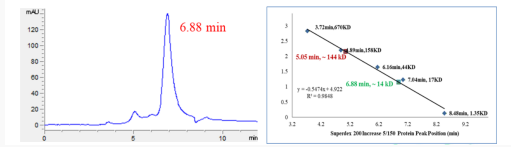


Tel: 1-631-559-9269 1-516-512-3133

Email: info@creative-biomart.com Fax: 1-631-938-8127

45-1 Ramsey Road, Shirley, NY 11967, USA

Analytical SEC



Activity

 Tel: 1-631-559-9269 1-516-512-3133

 Email: info@creative-biomart.com  Fax: 1-631-938-8127

 45-1 Ramsey Road, Shirley, NY 11967, USA