

Active Recombinant TEV Protease (AA 5-236), N-GFP and C-His-Tagged

Cat. No. Protease-75T **Lot. No.** (See product label)

SPECIFICATION

Product Overview	Recombinant TEV Protease (AA 5-236) with N-GFP and C-His tag was expressed in E. coli.
Species	Tobacco Etch Virus
Source	E.coli
ProteinLength	AA 5-236
Form	Liquid
Bio-activity	> 0.25 μmol/min/mg (determined by cleavage of labeled peptide (Fluorometric assay), TEV Protease Activity Kit)
AA Sequence	KGPRDYNPISSSICHLTNESDGHTTSLYGIGFGPFIITNKHLFRRNNGTLVVQSLHGV FKVKDTTTLQQHLVDGRDMIIIRMPKDFPPFPQKLFREPQREERICLVTTNFQTKSM SSMVSDTSCTFSPGDGIFWKHWIQTKDGQCGSPLVSTRDGFIVGIHSASNFTNTNN YFTSVPKNFMELLTNQEAQQWVSGWRLNADSVLWGGHKVFMVKPEEPFQPVKEA TQLMNE
Purity	> 85% as determined by SDS-PAGE
Storage	Stored at -20 centigrade and shipped on blue ice

 Tel: 1-631-559-9269 1-516-512-3133

 Email: info@creative-biomart.com  Fax: 1-631-938-8127

 45-1 Ramsey Road, Shirley, NY 11967, USA

Storage Buffer 50 mM Tris, 150 mM NaCl, 0.5 mM EDTA, 40% Glycerol; pH 8.0

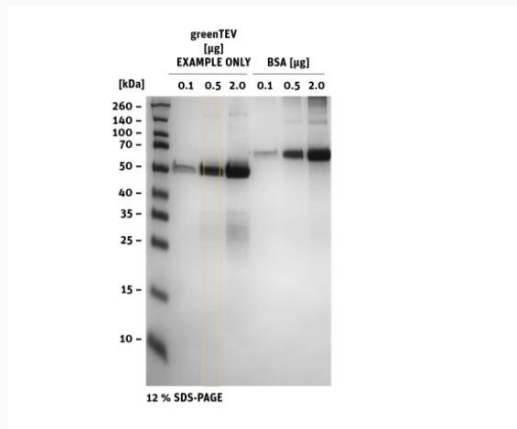
GENE INFORMATION

Official Symbol Protease

Synonyms greenTEV; p1 protease; TEV Protease; TEV; Tobacco Etch Virus nuclear-inclusion-a endopeptidase; rTEV; EC 3.4.22.44

UniProt ID [Q0GDU8](#)

SDS-PAGE

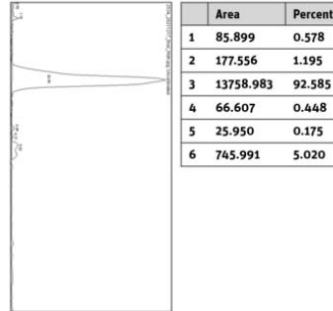


Tel: 1-631-559-9269 1-516-512-3133

Email: info@creative-biomart.com Fax: 1-631-938-8127

45-1 Ramsey Road, Shirley, NY 11967, USA

**Histogram of marked
lane in gel picture**



 Tel: 1-631-559-9269 1-516-512-3133

 Email: info@creative-biomart.com  Fax: 1-631-938-8127

 45-1 Ramsey Road, Shirley, NY 11967, USA