

Recombinant Mouse Prss2 protein, His-tagged

Cat. No. Prss2-7092M **Lot. No.** (See product label)

SPECIFICATION

Product Overview	Recombinant Mouse Prss2 aa. (Thr29~Gln240) fused with N-terminal His tag was produced in E. coli cells.
Species	Mouse
Source	E.coli
ProteinLength	Thr29~Gln240
Form	Freeze-dried powder
Molecular Mass	26kDa as determined by SDS-PAGE reducing conditions
Endotoxin	<1.0EU per 1ug (determined by the LAL method)
Purity	>95%
Characteristic	The isoelectric point is 5.7.
Applications	SDS-PAGE; WB; ELISA; IP; CoIP; Reporter Assays; Purification; Amine Reactive Labeling.
Stability	The thermal stability is described by the loss rate of the target protein. The loss rate was determined by accelerated thermal degradation test, that is, incubate the protein at 37°C for 48h, and no obvious degradation and precipitation were observed.

 Tel: 1-631-559-9269 1-516-512-3133

 Email: info@creative-biomart.com  Fax: 1-631-938-8127

 45-1 Ramsey Road, Shirley, NY 11967, USA

(Referring from China Biological Products Standard, which was calculated by the Arrhenius equation.) The loss of this protein is less than 5% within the expiration date under appropriate storage condition.

Storage

Avoid repeated freeze/thaw cycles. Store at 2-8°C for one month. Aliquot and store at -80°C for 12 months.

Concentration

200ug/mL

Storage buffer

20mM Tris, 150mM NaCl, pH8.0, containing 1mM EDTA, 1mM DTT, 0.01% sarcosyl, 5%Trehalose and Proclin300.

Reconstitution

Reconstitute in 20mM Tris, 150mM NaCl (pH8.0) to a concentration of 0.1-1.0 mg/mL.
Do not vortex

GENE INFORMATION

Gene Name

[Prss2 protease, serine 2 \[Mus musculus \(house mouse\) \]](#)

Official Symbol

[Prss2](#)

Synonyms

Prss2; protease, serine 2; Ta; TRY8; TRYP; Try2; Tesp4; anionic trypsin-2; anionic trypsin II; pretrypsinogen II; serine protease 2; trypsin 2; trypsinogen 20

Gene ID

[22072](#)

mRNA Refseq

[NM_009430.2](#)

Protein Refseq

[NP_033456.1](#)

UniProt ID

[P07146](#)

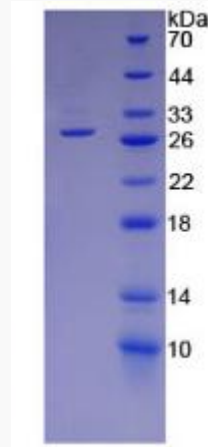
 Tel: 1-631-559-9269 1-516-512-3133

 Email: info@creative-biomart.com  Fax: 1-631-938-8127

 45-1 Ramsey Road, Shirley, NY 11967, USA



SDS-PAGE



Tel: 1-631-559-9269 1-516-512-3133

Email: info@creative-biomart.com Fax: 1-631-938-8127

45-1 Ramsey Road, Shirley, NY 11967, USA