

## Recombinant Rat Psmb8 protein, His & T7-tagged

**Cat. No.** Psmb8-7117R    **Lot. No.** (See product label)

### SPECIFICATION

<b>Product Overview</b>	Recombinant Rat Psmb8 aa. (Phe80~Ser261 (Accession # P28064)) fused with N-terminal His & T7 tag was produced in E. coli cells.
<b>Species</b>	Rat
<b>Source</b>	E.coli
<b>ProteinLength</b>	Phe80~Ser261
<b>Description</b>	May play a role in antigen processing.
<b>Form</b>	Freeze-dried powder
<b>Molecular Mass</b>	Predicted Molecular Mass: 24.0kDa
<b>Endotoxin</b>	<1.0EU per 1ug (determined by the LAL method)
<b>Purity</b>	>95%
<b>Characteristic</b>	The isoelectric point is 8.8.
<b>Applications</b>	SDS-PAGE; WB; ELISA; IP.
<b>Stability</b>	The thermal stability is described by the loss rate of the target protein. The loss rate was determined by accelerated thermal degradation test, that is, incubate the protein

 Tel: 1-631-559-9269    1-516-512-3133

 Email: [info@creative-biomart.com](mailto:info@creative-biomart.com)     Fax: 1-631-938-8127

 45-1 Ramsey Road, Shirley, NY 11967, USA

at 37°C for 48h, and no obvious degradation and precipitation were observed. (Referring from China Biological Products Standard, which was calculated by the Arrhenius equation.) The loss of this protein is less than 5% within the expiration date under appropriate storage condition.

**Storage**

Avoid repeated freeze/thaw cycles. Store at 2-8°C for one month. Aliquot and store at -80°C for 12 months.

**Storage buffer**

Supplied as lyophilized form in PBS, pH7.4, containing 5% sucrose, 0.01% sarcosyl.

**Reconstitution**

Reconstitute in sterile PBS, pH7.2-pH7.4.

## GENE INFORMATION

**Gene Name**

[Psmb8 proteasome subunit beta 8 \[ Rattus norvegicus \(Norway rat\) \]](#)

**Official Symbol**

[Psmb8](#)

**Synonyms**

Psmb8; proteasome subunit beta 8; Lmp7; Ring10; proteasome subunit beta type-8; large multifunctional protease 7; low molecular mass polypeptide 7; macropain subunit C13; multicatalytic endopeptidase complex subunit C13; proteasome (prosome, macropain) subunit, beta type 8 (large multifunctional peptidase 7); proteasome (prosome, macropain) subunit, beta type, 8; proteasome component C13; proteasome subunit beta-5i

**Gene ID**

[24968](#)

**mRNA Refseq**

[NM\\_080767.2](#)

**Protein Refseq**

[NP\\_542945.2](#)

 Tel: 1-631-559-9269 1-516-512-3133

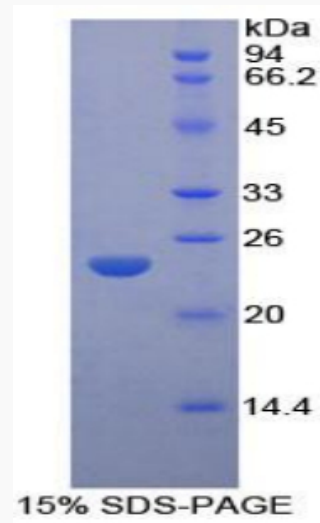
 Email: [info@creative-biomart.com](mailto:info@creative-biomart.com)  Fax: 1-631-938-8127

 45-1 Ramsey Road, Shirley, NY 11967, USA

UniProt ID

P28064

SDS-PAGE



 Tel: 1-631-559-9269 1-516-512-3133

 Email: [info@creative-biomart.com](mailto:info@creative-biomart.com)  Fax: 1-631-938-8127

 45-1 Ramsey Road, Shirley, NY 11967, USA