

Recombinant Mouse Psmb9 Protein, His-tagged

Cat. No. Psmb9-468M **Lot. No.** (See product label)

SPECIFICATION

Product Overview	Recombinant Mouse Psmb9(Thr22~Glu219) fused with His tag at N-terminal was expressed in E. coli.
Species	Mouse
Source	E.coli
ProteinLength	Thr22~Glu219
Description	Psmb9 played an important role in many functions.
Form	PBS, pH7.4, containing 0.01% SKL, 1mM DTT, 5% Trehalose and Proclin300.
Molecular Mass	25.0kDa
Identity	Reconstitute in PBS or others
Endotoxin	<1.0EU per 1g (determined by the LAL method)
Purity	> 95%
Applications	Positive Control; Immunogen; SDS-PAGE; WB. If bio-activity of the protein is needed, please check active protein
Stability	The thermal stability is described by the loss rate. The loss rate was determined by

 Tel: 1-631-559-9269 1-516-512-3133

 Email: info@creative-biomart.com  Fax: 1-631-938-8127

 45-1 Ramsey Road, Shirley, NY 11967, USA

accelerated thermal degradation test, that is, incubate the protein at 37 centigrade for 48h, and no obvious degradation and precipitation were observed. The loss rate is less than 5% within the expiration date under appropriate storage condition.

Storage

Avoid repeated freeze/thaw cycles. Store at 2-8 centigrade for one month. Aliquot and store at -80 centigrade for 12 months.

Reconstitution

Reconstitute in PBS or others

GENE INFORMATION

Gene Name

[Psmb9 proteasome \(prosome, macropain\) subunit, beta type 9 \(large multifunctional peptidase 2\) \[Mus musculus \]](#)

Official Symbol

[Psmb9](#)

Synonyms

PSMB9; proteasome (prosome, macropain) subunit, beta type 9 (large multifunctional peptidase 2); proteasome subunit beta type-9; LMP-2d; macropain chain 7; proteasome chain 7; proteosome beta 9 subunit; proteasome subunit beta-1i; low molecular mass protein 2; large multifunctional protease 2; really interesting new gene 12 protein; multicatalytic endopeptidase complex chain 7; proteosome (prosome, macropain) subunit, beta type 9 (large multifunctional peptidase 2); Lmp2; Lmp-2;

Gene ID

[16912](#)

mRNA Refseq

[NM_013585](#)

Protein Refseq

[NP_038613](#)

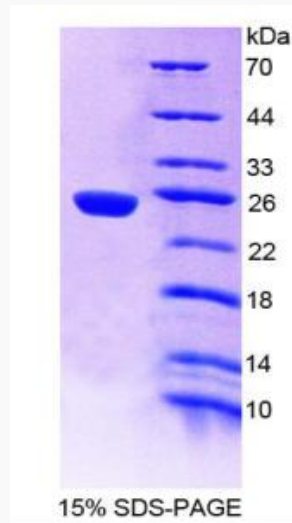
UniProt ID

[P28076](#)

 Tel: 1-631-559-9269 1-516-512-3133

 Email: info@creative-biomart.com  Fax: 1-631-938-8127

 45-1 Ramsey Road, Shirley, NY 11967, USA



Tel: 1-631-559-9269 1-516-512-3133

Email: info@creative-biomart.com Fax: 1-631-938-8127

45-1 Ramsey Road, Shirley, NY 11967, USA