

Recombinant Mouse Ptch1 protein, His & T7-tagged

Cat. No. Ptch1-1773M **Lot. No.** (See product label)

SPECIFICATION

Product Overview	Recombinant Mouse Ptch1 aa. (Leu213~Asp422 (Accession # Q61115)) fused with N-terminal His & T7 tag was produced in E. coli cells.
Species	Mouse
Source	E.coli
ProteinLength	Leu213~Asp422
Form	Freeze-dried powder
Molecular Mass	Predicted Molecular Mass: 27.3kDa
Endotoxin	<1.0EU per 1ug (determined by the LAL method)
Purity	>95%
Applications	SDS-PAGE; WB; ELISA; IP.
Stability	The thermal stability is described by the loss rate. The loss rate was determined by accelerated thermal degradation test, that is, incubate the protein at 37°C for 48h, and no obvious degradation and precipitation were observed. The loss rate is less than 5% within the expiration date under appropriate storage condition.
Storage	Avoid repeated freeze/thaw cycles. Store at 2-8°C for one month. Aliquot and store at

 Tel: 1-631-559-9269 1-516-512-3133

 Email: info@creative-biomart.com  Fax: 1-631-938-8127

 45-1 Ramsey Road, Shirley, NY 11967, USA

-80°C for 12 months.

Storage buffer

Supplied as lyophilized form in 20mM Tris, 500mM NaCl, pH8.0, containing 1mM EDTA, 1mM DTT, 0.01% sarcosyl, 5% trehalose, and preservative.

Reconstitution

Reconstitute in ddH₂O.

Isoelectric Point

6.3

GENE INFORMATION

Gene Name

Ptch1 patched 1 [*Mus musculus* (house mouse)]

Official Symbol

Ptch1

Synonyms

Ptch1; patched 1; Ptc; mes; Ptc1; Ptch; A230106A15Rik; protein patched homolog 1; Ptch1 protein +12b; mesenchymal dysplasia; patched homolog 1

Gene ID

19206

mRNA Refseq

NM_008957.3

Protein Refseq

NP_032983.1

UniProt ID

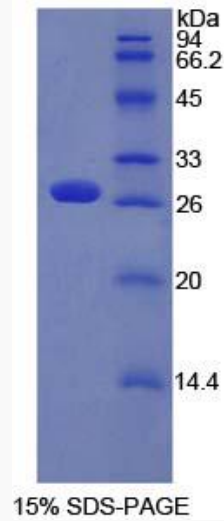
Q61115

 Tel: 1-631-559-9269 1-516-512-3133

 Email: info@creative-biomart.com  Fax: 1-631-938-8127

 45-1 Ramsey Road, Shirley, NY 11967, USA

SDS-PAGE



 Tel: 1-631-559-9269 1-516-512-3133

 Email: info@creative-biomart.com  Fax: 1-631-938-8127

 45-1 Ramsey Road, Shirley, NY 11967, USA