

Recombinant Mouse Ptges2 protein, His-tagged

Cat. No. Ptges2-5624M Lot. No. (See product label)

SPECIFICATION

Product Overview	Recombinant Mouse Ptges2 aa. (Tyr144~Asp384) fused with N-terminal His tag was produced in E. coli cells.
Species	Mouse
Source	E.coli
ProteinLength	Tyr144~Asp384
Description	The protein encoded by this gene is a Golgi membrane-associated prostaglandin E synthase candidate, which is capable of catalyzing the conversion of prostaglandin H2 to prostaglandin E2 in vitro. However, a study using mice deficient of this gene suggests that this enzyme does not contribute to prostaglandin E2 biosynthesis in vivo. This protein is synthesized as a Golgi membrane-bound protein, but its N-terminal hydrophobic region is cleaved off during protein maturation to produce the predominant soluble truncated form that still retains the enzyme activity. This soluble protein also has been shown to activate the transcription regulated by a gamma-interferon-activated transcription element (GATE), possibly via an interaction with CAAAT/enhancer-binding protein-beta.
Form	Freeze-dried powder
Molecular Mass	30kDa as determined by SDS-PAGE reducing conditions.
Endotoxin	<1.0EU per 1g (determined by the LAL method)

 Tel: 1-631-559-9269 1-516-512-3133

 Email: info@creative-biomart.com  Fax: 1-631-938-8127

 45-1 Ramsey Road, Shirley, NY 11967, USA

Purity	>98%
Characteristic	The isoelectric point is 6.4.
Applications	Positive Control; Immunogen; SDS-PAGE; WB.
Stability	The thermal stability is described by the loss rate. The loss rate was determined by accelerated thermal degradation test, that is, incubate the protein at 37°C for 48h, and no obvious degradation and precipitation were observed. The loss rate is less than 5% within the expiration date under appropriate storage condition.
Storage	Avoid repeated freeze/thaw cycles. Store at 2-8°C for one month. Aliquot and store at -80°C for 12 months.
Concentration	200µg/mL
Storage buffer	20mM Tris, 150mM NaCl, pH8.0, containing 1mM EDTA, 1mM DTT, 0.01% sarcosyl, 5%Trehalose and Proclin300.
Reconstitution	Reconstitute in 20mM Tris, 150mM NaCl (pH8.0) to a concentration of 0.1-1.0 mg/mL. Do not vortex.

GENE INFORMATION

Gene Name	Ptges2 prostaglandin E synthase 2 [<i>Mus musculus</i> (house mouse)]
Official Symbol	Ptges2
Synonyms	Ptges2; prostaglandin E synthase 2; Gbf1; Pges2; C79137; Mpges2; 0610038H10Rik; prostaglandin E synthase 2; GATE-binding factor 1; mPGES-2; microsomal prostaglandin E synthase 2

 Tel: 1-631-559-9269 1-516-512-3133

 Email: info@creative-biomart.com  Fax: 1-631-938-8127

 45-1 Ramsey Road, Shirley, NY 11967, USA

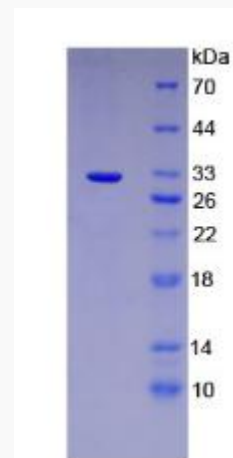
Gene ID 96979

mRNA Refseq NM_133783.2

Protein Refseq NP_598544.2

UniProt ID Q8BWM0

SDS-PAGE



Tel: 1-631-559-9269 1-516-512-3133

Email: info@creative-biomart.com Fax: 1-631-938-8127

45-1 Ramsey Road, Shirley, NY 11967, USA