

## Recombinant Rat Ptma Protein, His&GST-tagged

**Cat. No.** Ptma-2000R    **Lot. No.** (See product label)

### SPECIFICATION

<b>Product Overview</b>	Recombinant Rat Ptma Protein (Ser2-Asp112) with N-His&GST tag was expressed in E. coli.
<b>Species</b>	Rat
<b>Source</b>	E.coli
<b>ProteinLength</b>	Ser2-Asp112
<b>Description</b>	<p>Predicted to enable DNA-binding transcription factor binding activity and histone binding activity. Involved in negative regulation of cysteine-type endopeptidase activity involved in apoptotic process; positive regulation of NF-kappaB transcription factor activity; and positive regulation of transcription by RNA polymerase II.</p> <p>Predicted to be located in cytosol and nucleoplasm. Orthologous to human PTMA (prothymosin alpha).</p>
<b>Form</b>	Freeze-dried powder
<b>Molecular Mass</b>	<p>Predicted Molecular Mass: 42.2 kDa</p> <p>Accurate Molecular Mass: 42 kDa</p>
<b>Purity</b>	> 90%
<b>Applications</b>	Positive Control; Immunogen; SDS-PAGE; WB.

 Tel: 1-631-559-9269    1-516-512-3133

 Email: [info@creative-biomart.com](mailto:info@creative-biomart.com)     Fax: 1-631-938-8127

 45-1 Ramsey Road, Shirley, NY 11967, USA

<b>Stability</b>	The thermal stability is described by the loss rate. The loss rate was determined by accelerated thermal degradation test, that is, incubate the protein at 37 centigrade for 48h, and no obvious degradation and precipitation were observed. The loss rate is less than 5% within the expiration date under appropriate storage condition.
<b>Storage</b>	Avoid repeated freeze/thaw cycles. Store at 2-8 centigrade for one month. Aliquot and store at -80 centigrade for 12 months.
<b>Storage Buffer</b>	100mM NaHCO <sub>3</sub> , 500mM NaCl, pH8.3, containing 1mM EDTA, 1mM DTT, 0.01% SKL, 5% Trehalose and Proclin300.
<b>Reconstitution</b>	Reconstitute in 100mM NaHCO <sub>3</sub> , 500mM NaCl (pH8.3) to a concentration of 0.1-1.0 mg/mL. Do not vortex.

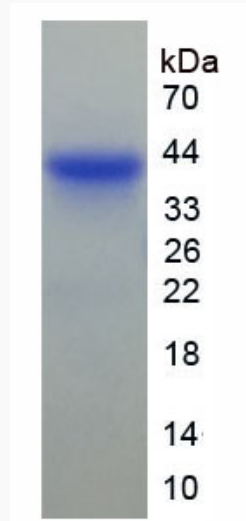
## GENE INFORMATION

<b>Gene Name</b>	<a href="#">Ptma prothymosin alpha [ Rattus norvegicus (Norway rat) ]</a>
<b>Official Symbol</b>	<a href="#">Ptma</a>
<b>Synonyms</b>	PTMA; prothymosin alpha; alpha-prothymosin; prothymosin-alpha;
<b>Gene ID</b>	<a href="#">29222</a>
<b>mRNA Refseq</b>	<a href="#">NM_021740</a>
<b>Protein Refseq</b>	<a href="#">NP_068508</a>
<b>UniProt ID</b>	<a href="#">P06302</a>

 Tel: 1-631-559-9269 1-516-512-3133

 Email: [info@creative-biomart.com](mailto:info@creative-biomart.com)  Fax: 1-631-938-8127

 45-1 Ramsey Road, Shirley, NY 11967, USA



Tel: 1-631-559-9269 1-516-512-3133

Email: [info@creative-biomart.com](mailto:info@creative-biomart.com) Fax: 1-631-938-8127

45-1 Ramsey Road, Shirley, NY 11967, USA