

Recombinant Rat Ptpnj protein, His & T7-tagged

Cat. No. Ptpnj-7101R **Lot. No.** (See product label)

SPECIFICATION

Product Overview	Recombinant Rat Ptpnj aa. (Arg1033~Pro1277 (Accession # E9PTB7)) fused with N-terminal His & T7 tag was produced in E. coli cells.
Species	Rat
Source	E.coli
ProteinLength	Arg1033~Pro1277
Description	Protein tyrosine phosphatase expressed in smooth muscle cells; may be involved in cell adhesion or cell-cell signaling.
Form	Freeze-dried powder
Molecular Mass	Predicted Molecular Mass: 32.4kDa
Endotoxin	<1.0EU per 1ug (determined by the LAL method)
Purity	>95%
Characteristic	The isoelectric point is 6.1.
Applications	SDS-PAGE; WB; ELISA; IP.
Stability	The thermal stability is described by the loss rate of the target protein. The loss rate

 Tel: 1-631-559-9269 1-516-512-3133

 Email: info@creative-biomart.com  Fax: 1-631-938-8127

 45-1 Ramsey Road, Shirley, NY 11967, USA

was determined by accelerated thermal degradation test, that is, incubate the protein at 37°C for 48h, and no obvious degradation and precipitation were observed. (Referring from China Biological Products Standard, which was calculated by the Arrhenius equation.) The loss of this protein is less than 5% within the expiration date under appropriate storage condition.

Storage	Avoid repeated freeze/thaw cycles. Store at 2-8°C for one month. Aliquot and store at -80°C for 12 months.
Storage buffer	Supplied as lyophilized form in PBS, pH7.4, containing 5% sucrose, 0.01% sarcosyl.
Reconstitution	Reconstitute in sterile PBS, pH7.2-pH7.4.

GENE INFORMATION

Gene Name	Ptprj protein tyrosine phosphatase, receptor type, J [<i>Rattus norvegicus</i> (Norway rat)]
Official Symbol	Ptprj
Synonyms	Ptprj; protein tyrosine phosphatase, receptor type, J; DEP-1; receptor-type tyrosine-protein phosphatase eta; density enhanced phosphatase-1
Gene ID	29645
mRNA Refseq	NM_017269.2
Protein Refseq	NP_058965.2
UniProt ID	E9PTB7

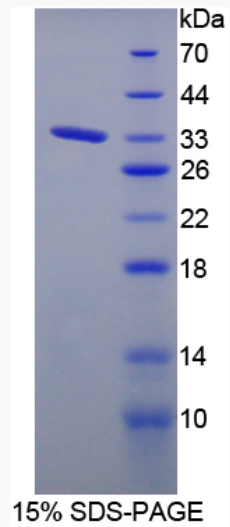
 Tel: 1-631-559-9269 1-516-512-3133

 Email: info@creative-biomart.com  Fax: 1-631-938-8127

 45-1 Ramsey Road, Shirley, NY 11967, USA



SDS-PAGE



Tel: 1-631-559-9269 1-516-512-3133

Email: info@creative-biomart.com Fax: 1-631-938-8127

45-1 Ramsey Road, Shirley, NY 11967, USA