

Recombinant Rat Ptpn2 Protein, His-tagged

Cat. No. Ptpn2-2006R **Lot. No.** (See product label)

SPECIFICATION

Product Overview	Recombinant Rat Ptpn2 Protein (Ser785-Gln1004) with N-His tag was expressed in E. coli.
Species	Rat
Source	E.coli
ProteinLength	Ser785-Gln1004
Description	Predicted to enable protein tyrosine phosphatase activity. Involved in negative regulation of GTPase activity. Located in endoplasmic reticulum lumen; secretory granule; and terminal bouton. Is integral component of synaptic vesicle membrane. Human ortholog(s) of this gene implicated in prediabetes syndrome and type 1 diabetes mellitus. Orthologous to human PTPRN2 (protein tyrosine phosphatase receptor type N2).
Form	Freeze-dried powder
Molecular Mass	Predicted Molecular Mass: 28.7 kDa Accurate Molecular Mass: 29 kDa
Purity	> 95%
Applications	Positive Control; Immunogen; SDS-PAGE; WB.

 Tel: 1-631-559-9269 1-516-512-3133

 Email: info@creative-biomart.com  Fax: 1-631-938-8127

 45-1 Ramsey Road, Shirley, NY 11967, USA

Stability	The thermal stability is described by the loss rate. The loss rate was determined by accelerated thermal degradation test, that is, incubate the protein at 37 centigrade for 48h, and no obvious degradation and precipitation were observed. The loss rate is less than 5% within the expiration date under appropriate storage condition.
Storage	Avoid repeated freeze/thaw cycles. Store at 2-8 centigrade for one month. Aliquot and store at -80 centigrade for 12 months.
Storage Buffer	20mM Tris, 150mM NaCl, pH8.0, containing 1mM EDTA, 1mM DTT, 0.01% SKL, 5% Trehalose and Proclin300.
Reconstitution	Reconstitute in 10mM PBS (pH7.4) to a concentration of 0.1-1.0 mg/mL. Do not vortex.

GENE INFORMATION

Gene Name	Ptprn2 protein tyrosine phosphatase, receptor type, N polypeptide 2 [Rattus norvegicus (Norway rat)]
Official Symbol	Ptprn2
Synonyms	PTPRN2; protein tyrosine phosphatase, receptor type, N polypeptide 2; receptor-type tyrosine-protein phosphatase N2; PTPNE6; phogrin; PTP NE-6; R-PTP-N2; protein tyrosine phosphatase receptor-type N polypeptide 2; protein tyrosine phosphatase, receptor-type, N polypeptide 2;
Gene ID	29714
mRNA Refseq	NM_031600
Protein Refseq	NP_113788

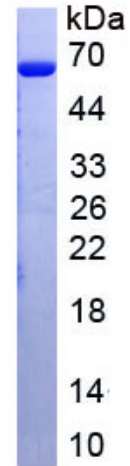
 Tel: 1-631-559-9269 1-516-512-3133

 Email: info@creative-biomart.com  Fax: 1-631-938-8127

 45-1 Ramsey Road, Shirley, NY 11967, USA

UniProt ID

Q63475



 Tel: 1-631-559-9269 1-516-512-3133

 Email: info@creative-biomart.com  Fax: 1-631-938-8127

 45-1 Ramsey Road, Shirley, NY 11967, USA