

Recombinant Mouse Pym protein, His-tagged

Cat. No. Pym-7822M **Lot. No.** (See product label)

SPECIFICATION

Product Overview	Recombinant Mouse Pym aa. (Arg11~Gly187) fused with N-terminal His tag was produced in E. coli cells.
Species	Mouse
Source	E.coli
ProteinLength	Arg11~Gly187
Description	This gene encodes a glycolysis enzyme found in muscle. Highly similar enzymes encoded by different genes are found in liver and brain. The encoded protein is involved in regulating the breakdown of glycogen to glucose-1-phosphate, which is necessary for ATP generation.
Form	Freeze-dried powder
Molecular Mass	26kDa as determined by SDS-PAGE reducing conditions.
Endotoxin	<1.0EU per 1g (determined by the LAL method)
Purity	>98%
Characteristic	The isoelectric point is 6.
Applications	SDS-PAGE; WB; ELISA; IP; CoIP; Reporter Assays; Purification;

 Tel: 1-631-559-9269 1-516-512-3133

 Email: info@creative-biomart.com  Fax: 1-631-938-8127

 45-1 Ramsey Road, Shirley, NY 11967, USA

Amine Reactive Labeling.

Stability

The thermal stability is described by the loss rate. The loss rate was determined by accelerated thermal degradation test, that is, incubate the protein at 37°C for 48h, and no obvious degradation and precipitation were observed. The loss rate is less than 5% within the expiration date under appropriate storage condition.

Storage

Avoid repeated freeze/thaw cycles. Store at 2-8°C for one month. Aliquot and store at -80°C for 12 months.

Concentration

200µg/mL

Storage buffer

20mM Tris, 150mM NaCl, pH8.0, containing 1mM EDTA, 1mM DTT, 0.01% sarcosyl, 5%Trehalose and Proclin300.

Reconstitution

Reconstitute in 20mM Tris, 150mM NaCl (pH8.0) to a concentration of 0.1-1.0 mg/mL. Do not vortex.

GENE INFORMATION

Gene Name

Pygm muscle glycogen phosphorylase [*Mus musculus* (house mouse)]

Official Symbol

Pygm

Synonyms

Pygm; muscle glycogen phosphorylase; PG; AI115133; glycogen phosphorylase, muscle form; myophosphorylase

Gene ID

19309

mRNA Refseq

NM_011224.2

 Tel: 1-631-559-9269 1-516-512-3133

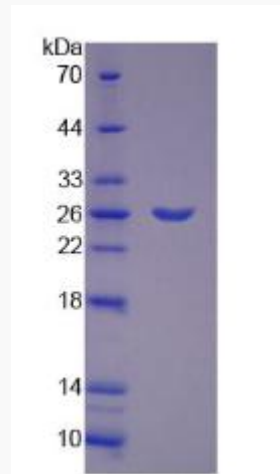
 Email: info@creative-biomart.com  Fax: 1-631-938-8127

 45-1 Ramsey Road, Shirley, NY 11967, USA

Protein Refseq NP_035354.1

UniProt ID Q9WUB3

SDS-PAGE



 Tel: 1-631-559-9269 1-516-512-3133

 Email: info@creative-biomart.com  Fax: 1-631-938-8127

 45-1 Ramsey Road, Shirley, NY 11967, USA