

## Recombinant Human QPCT Protein, His-SUMO-tagged

Cat. No. QPCT-1347H Lot. No. (See product label)

### SPECIFICATION

<b>Product Overview</b>	Recombinant Human QPCT Protein (29-361aa) was expressed in E. coli with N-terminal His tag.
<b>Species</b>	Human
<b>Source</b>	E.coli
<b>ProteinLength</b>	29-361 a.a.
<b>Form</b>	Tris-based buffer, 50% glycerol.
<b>Molecular Mass</b>	53.9 kDa
<b>AA Sequence</b>	VSPSASAWPEEKNYHQPAILNSSLRQIAEGTSEMWQNDLQPLLIERYPGSPGSY AARQHIMQRIQRLQADWVLEIDTFLSQTPYGYRSFSNIISTLNPTAKRHLVLACHYDS KYFSHWNNRVFVGATDSAVPCAMMLELARALDKLLSLKTVSDSKPDLQLIFFDG EEAFLHWSPQDSLYGSRHLAAKMASTPHPPGARGTSQLHGMDLLVLLDLIGAPNPT FPNFFPNSARWFERLQAIEHELHELGLLDKHSLEGRYFQNYSGGVIQDDHIPFLRR GVPVLHLIPSPFPEVWHTMDDNEENLDESTIDNLNKILQVFVLEYLHL
<b>Purity</b>	Greater than 90% as determined by SDS-PAGE.
<b>Storage</b>	The shelf life of liquid form is 6 months at -20 centigrade/-80 centigrade. The shelf life of lyophilized form is 12 months at -20 centigrade/-80 centigrade.

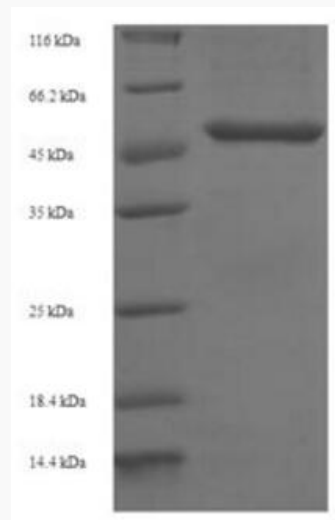
 Tel: 1-631-559-9269 1-516-512-3133

 Email: [info@creative-biomart.com](mailto:info@creative-biomart.com)  Fax: 1-631-938-8127

 45-1 Ramsey Road, Shirley, NY 11967, USA

## GENE INFORMATION

<b>Gene Name</b>	QPCT glutaminyl-peptide cyclotransferase [ Homo sapiens ]
<b>Official Symbol</b>	QPCT
<b>Synonyms</b>	QPCT; glutaminyl-peptide cyclotransferase; GCT; glutaminyl cyclase; QC; EC; glutamyl cyclase; glutaminyl-tRNA cyclotransferase; sQC
<b>Gene ID</b>	25797
<b>mRNA Refseq</b>	NM_012413
<b>Protein Refseq</b>	NP_036545
<b>MIM</b>	607065
<b>UniProt ID</b>	Q16769



 Tel: 1-631-559-9269 1-516-512-3133

 Email: [info@creative-biomart.com](mailto:info@creative-biomart.com)  Fax: 1-631-938-8127

 45-1 Ramsey Road, Shirley, NY 11967, USA