

## Recombinant Mouse QPCT Protein (36-362 aa), His-tagged

Cat. No. QPCT-2139M Lot. No. (See product label)

### SPECIFICATION

<b>Product Overview</b>	Recombinant Mouse QPCT Protein (36-362 aa) is produced by E. coli expression system. This protein is fused with a 6xHis tag at the N-terminal. Research Area: Neuroscience. Protein Description: Full Length of Mature Protein.
<b>Species</b>	Mouse
<b>Source</b>	E.coli
<b>ProteinLength</b>	36-362 aa
<b>Description</b>	Responsible for the biosynthesis of pyroglutamyl peptides. Has a bias against acidic and tryptophan residues adjacent to the N-terminal glutamyl residue and a lack of importance of chain length after the second residue (By similarity).
<b>Form</b>	Tris-based buffer,50% glycerol
<b>Molecular Mass</b>	41.6 kDa
<b>AA Sequence</b>	AWTQEKNHHQPAHLNSSSLQQVAEGTISEMWQNDLRPLLIERYPGSPGYSARQ HIMQRIQRLQAEWVVEVDTFLSRTPYGYRSFSNIISTLNPEAKRHLVLACHYDSKYFP RWDSRVFVGATDSAVPCAMMLELARALDKKLHSLKDVSGSKPDLRLIFFDGEEA FHHWSPQDSLYGSRHLAQKMASSPHPPGSRGTNQLDGMDLLVLLDLIGAANPTFP NFFPKTTRWFNRLQAIEKELYELGLLDHSLERKYFQNFYGNIIQDDHIPFLRKGVP VLHLIASPFPEVWHTMDDNEENLHASTIDNLNKIIQVFVLEYLHL

 Tel: 1-631-559-9269 1-516-512-3133

 Email: [info@creative-biomart.com](mailto:info@creative-biomart.com)  Fax: 1-631-938-8127

 45-1 Ramsey Road, Shirley, NY 11967, USA

<b>Purity</b>	> 90% as determined by SDS-PAGE.
<b>Notes</b>	Repeated freezing and thawing is not recommended. Store working aliquots at 4 centigrade for up to one week.
<b>Storage</b>	The shelf life is related to many factors, storage state, buffer ingredients, storage temperature and the stability of the protein itself. Generally, the shelf life of liquid form is 6 months at -20 centigrade/-80 centigrade. The shelf life of lyophilized form is 12 months at -20 centigrade/-80 centigrade.
<b>Concentration</b>	A hardcopy of COA with reconstitution instruction is sent along with the products.

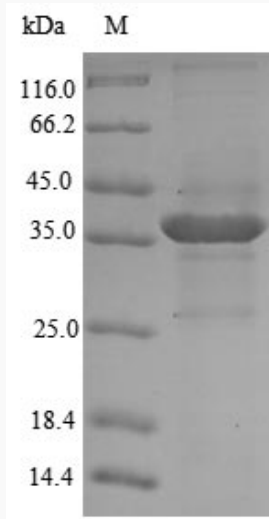
## GENE INFORMATION

<b>Gene Name</b>	<a href="#">Qpct glutaminyl-peptide cyclotransferase (glutaminyl cyclase) [ Mus musculus ]</a>
<b>Official Symbol</b>	<a href="#">QPCT</a>
<b>Synonyms</b>	QPCT; QC; glutaminyl cyclase; 5730422A13Rik;
<b>Gene ID</b>	<a href="#">70536</a>
<b>mRNA Refseq</b>	<a href="#">NM_027455</a>
<b>Protein Refseq</b>	<a href="#">NP_081731</a>
<b>UniProt ID</b>	<a href="#">Q9CYK2</a>

 Tel: 1-631-559-9269 1-516-512-3133

 Email: [info@creative-biomart.com](mailto:info@creative-biomart.com)  Fax: 1-631-938-8127

 45-1 Ramsey Road, Shirley, NY 11967, USA



(Tris-Glycine gel) Discontinuous SDS-PAGE (reduced) with 5% enrichment gel and 15% separation gel.

 Tel: 1-631-559-9269 1-516-512-3133

 Email: [info@creative-biomart.com](mailto:info@creative-biomart.com)  Fax: 1-631-938-8127

 45-1 Ramsey Road, Shirley, NY 11967, USA