

Recombinant Mouse QPCT Protein (36-362 aa), His-tagged

Cat. No. QPCT-2269M Lot. No. (See product label)

SPECIFICATION

Product Overview	Recombinant Mouse QPCT Protein (36-362 aa) is produced by Yeast expression system. This protein is fused with a 6xHis tag at the N-terminal. Research Area: Neuroscience. Protein Description: Full Length of Mature Protein.
Species	Mouse
Source	Yeast
ProteinLength	36-362 aa
Description	Responsible for the biosynthesis of pyroglutamyl peptides. Has a bias against acidic and tryptophan residues adjacent to the N-terminal glutaminy residue and a lack of importance of chain length after the second residue.
Form	Tris-based buffer, 50% glycerol
Molecular Mass	39.6 kDa
AA Sequence	<p>AWTQEKNHHQPAHLNSSSLQQVAEGTSEMWQNDLRPLLIERYPGSPGSYSARQ HIMQRIQRLQAEWVVEVDTFLSRTPYGYRSFSNIISTLNPEAKRHLVLACHYDSKYFP RWDSRVFVGATDSAVPCAMMLELARALDKKLHSLKDVSGSKPDLRLIFFDGEEA FHHWSPQDSLYGSRHLAQKMASSPHPPGSRGTNQLDGMDLLVLLDLIGAANPTFP NFFPKTTRWFNRLQAIEKELYELGLLKDHSLERKYFQNFYGNIIQDDHIPFLRKGVP VLHLIASPFPEVWHTMDDNEENLHASTIDNLNKIIQVFVLEYLHL</p>

 Tel: 1-631-559-9269 1-516-512-3133

 Email: info@creative-biomart.com  Fax: 1-631-938-8127

 45-1 Ramsey Road, Shirley, NY 11967, USA

Purity	> 90% as determined by SDS-PAGE.
Notes	Repeated freezing and thawing is not recommended. Store working aliquots at 4 centigrade for up to one week.
Storage	The shelf life is related to many factors, storage state, buffer ingredients, storage temperature and the stability of the protein itself. Generally, the shelf life of liquid form is 6 months at -20 centigrade/-80 centigrade. The shelf life of lyophilized form is 12 months at -20 centigrade/-80 centigrade.
Concentration	A hardcopy of COA will be sent along with the products. Please refer to it for detailed information.

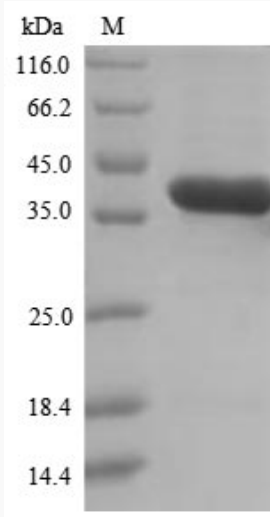
GENE INFORMATION

Gene Name	Qpct glutaminyl-peptide cyclotransferase (glutaminyl cyclase) [<i>Mus musculus</i>]
Official Symbol	QPCT
Synonyms	QPCT; QC; glutaminyl cyclase; glutaminyl-tRNA cyclotransferase; 5730422A13Rik;
Gene ID	70536
mRNA Refseq	NM_027455
Protein Refseq	NP_081731
UniProt ID	Q9CYK2

 Tel: 1-631-559-9269 1-516-512-3133

 Email: info@creative-biomart.com  Fax: 1-631-938-8127

 45-1 Ramsey Road, Shirley, NY 11967, USA



(Tris-Glycine gel) Discontinuous SDS-PAGE (reduced) with 5% enrichment gel and 15% separation gel.

 Tel: 1-631-559-9269 1-516-512-3133

 Email: info@creative-biomart.com  Fax: 1-631-938-8127

 45-1 Ramsey Road, Shirley, NY 11967, USA