

Recombinant Full Length Human QPCT Protein, C-Flag-tagged

Cat. No. QPCT-322HFL **Lot. No.** (See product label)

SPECIFICATION

Product Overview	Recombinant Full Length Human QPCT Protein, fused to Flag-tag at C-terminus, was expressed in Mammalian cells.
Species	Human
Source	Mammalian Cells
Description	This gene encodes human pituitary glutaminyl cyclase, which is responsible for the presence of pyroglutamyl residues in many neuroendocrine peptides. The amino acid sequence of this enzyme is 86% identical to that of bovine glutaminyl cyclase.
Form	25 mM Tris HCl, pH 7.3, 100 mM glycine, 10% glycerol.
Molecular Mass	37.8 kDa
AA Sequence	<p>MAGGRHRRVVGTLHLLLLVAALPWASRGVSPSASAWPEEKNYHQPAILNSSALRQI AEGTISEMWQNDL QPLLIERYPGSPGSAARQHIMQRIQRLQADWVLEIDTFLSQT PYGYRSFSNIISTLNPTAKRHLVLACH YDSKYFSHWNNRVFVGATDSAVPCAMMLE LARALDKLLSLKTVSDSKPDLQLIFFDGEEAFLHWSPQ DSLYGSRHAAKMAST PHPPGARGTSQLHGMDLLVLLDLIGAPNPTFPNFFPNSARWFERLQAIEHELHE LGL LKDHSLEGRYFQNYSYGGVIQDDHIPFLRRGVPVLHLIPSPFPEVWHTMDDNEENLD ESTIDNLNKI LQVFLVLEYLHLRTRPLEQKLISEEDLAANDILDYKDDDDKV</p>
Purity	> 80% as determined by SDS-PAGE and Coomassie blue staining.

 Tel: 1-631-559-9269 1-516-512-3133

 Email: info@creative-biomart.com  Fax: 1-631-938-8127

 45-1 Ramsey Road, Shirley, NY 11967, USA

Stability	Stable for 12 months from the date of receipt of the product under proper storage and handling conditions. Avoid repeated freeze-thaw cycles.
Storage	Store at -80 centigrade.
Concentration	>50 ug/mL as determined by microplate BCA method.
Preparation	Recombinant protein was captured through anti-DDK affinity column followed by conventional chromatography steps.
Protein Pathways	Protease
Full Length	Full L.

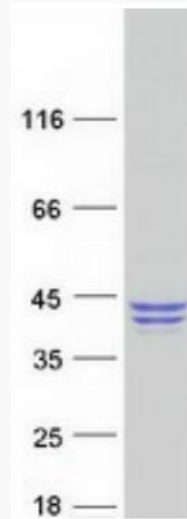
GENE INFORMATION

Gene Name	QPCT glutaminyl-peptide cyclotransferase [Homo sapiens (human)]
Official Symbol	QPCT
Synonyms	QC; GCT; sQC
Gene ID	25797
mRNA Refseq	NM_012413.4
Protein Refseq	NP_036545.1
MIM	607065
UniProt ID	Q16769

 Tel: 1-631-559-9269 1-516-512-3133

 Email: info@creative-biomart.com  Fax: 1-631-938-8127

 45-1 Ramsey Road, Shirley, NY 11967, USA



Coomassie blue staining of purified QPCT protein.

 Tel: 1-631-559-9269 1-516-512-3133

 Email: info@creative-biomart.com  Fax: 1-631-938-8127

 45-1 Ramsey Road, Shirley, NY 11967, USA