

Recombinant Human QPCT Protein, Myc/DDK-tagged, C13 and N15-labeled

Cat. No. QPCT-3307H **Lot. No.** (See product label)

SPECIFICATION

Product Overview	QPCT MS Standard C13 and N15-labeled recombinant protein (NP_036545) with a C-terminal MYC/DDK tag, was expressed in HEK293 cells.
Species	Human
Source	HEK293
Description	This gene encodes human pituitary glutamyl cyclase, which is responsible for the presence of pyroglutamyl residues in many neuroendocrine peptides. The amino acid sequence of this enzyme is 86% identical to that of bovine glutamyl cyclase.
Molecular Mass	40.9 kDa
AA Sequence	MAGGRHRRVVGTLHLLLLVAALPWASRGVSPSASAWPEEKNYHQPAILNSSLRQI AEGTSISEMWQNDLQPLLIERYPGSPGSYAARQHIMQRIQRLQADWVLEIDTFLSQT PYGYRSFSNIISTLNPTAKRHLVLACHYDSKYFSHWNNRVFVGATDSAVPCAMMLEL ARALDKLLSLKTVSDSKPDLQLIFFDGEEAFLHWSPQDSLYGSRHLAAKMASTP HPPGARGTSQLHGMDLLVLLDLIGAPNPTFPNFFPNSARWFERLQAIHELHELGLL KDHSLEGRYFQNYSGGVIQDDHIPFLRRGVPVLHLIPSPFPEVWHTMDDNEENLD ESTIDNLNKILQVFLVLEYLHLTRTRPLEQKLISEEDLAANDILDYKDDDDKV
Purity	> 80% as determined by SDS-PAGE and Coomassie blue staining
Stability	Stable for 3 months from receipt of products under proper storage and handling

 Tel: 1-631-559-9269 1-516-512-3133

 Email: info@creative-biomart.com  Fax: 1-631-938-8127

 45-1 Ramsey Road, Shirley, NY 11967, USA

conditions.

Storage Store at -80 centigrade. Avoid repeated freeze-thaw cycles.

Concentration 50 µg/mL as determined by BCA

Storage Buffer 100 mM glycine, 25 mM Tris-HCl, pH 7.3.

GENE INFORMATION

Gene Name QPCT glutaminyl-peptide cyclotransferase [Homo sapiens (human)]

Official Symbol QPCT

Synonyms QPCT; glutaminyl-peptide cyclotransferase; GCT; glutaminyl cyclase; QC; EC; glutamyl cyclase; glutaminyl-tRNA cyclotransferase; sQC;

Gene ID 25797

mRNA Refseq NM_012413

Protein Refseq NP_036545

MIM 607065

UniProt ID Q16769

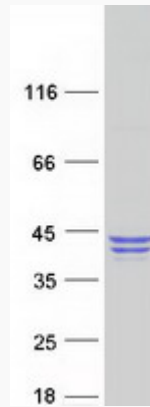
 Tel: 1-631-559-9269 1-516-512-3133

 Email: info@creative-biomart.com  Fax: 1-631-938-8127

 45-1 Ramsey Road, Shirley, NY 11967, USA



SDS-PAGE



☎ Tel: 1-631-559-9269 1-516-512-3133

☎ Email: info@creative-biomart.com ☎ Fax: 1-631-938-8127

☎ 45-1 Ramsey Road, Shirley, NY 11967, USA