

Recombinant Human QPCT protein, His&Myc-tagged

Cat. No. QPCT-7565H Lot. No. (See product label)

SPECIFICATION

Product Overview	Recombinant Human QPCT protein(Q16769)(29-361aa), fused with N-terminal His tag and C-terminal Myc tag, was expressed in Insect cells.
Species	Human
Source	Insect cells
ProteinLength	29-361aa
Tag	N-His&C-Myc
Form	If the delivery form is liquid, the default storage buffer is Tris/PBS-based buffer, 5%-50% glycerol. If the delivery form is lyophilized powder, the buffer before lyophilization is Tris/PBS-based buffer, 6% Trehalose, pH 8.0.
Molecular Mass	41.8 kDa
Purity	Greater than 85% as determined by SDS-PAGE.
Storage	Store at -20°C/-80°C upon receipt, aliquoting is necessary for mutiple use. Avoid repeated freeze-thaw cycles.
Reconstitution	We recommend that this vial be briefly centrifuged prior to opening to bring the contents to the bottom. Please reconstitute protein in deionized sterile water to a concentration of 0.1-1.0 mg/mL. We recommend to add 5-50% of glycerol (final

 Tel: 1-631-559-9269 1-516-512-3133

 Email: info@creative-biomart.com  Fax: 1-631-938-8127

 45-1 Ramsey Road, Shirley, NY 11967, USA

concentration) and aliquot for long-term storage at -20°C/-80°C.

AA Sequence

VSPSASAWPEEKNYHQPAILNSSLRQIAEGTSESEMWQNDLQPLLIERYPGSPGSY
 AARQHIMQRIQLQADWVLEIDTFLSQTPYGYRSFSNIISTLNPTAKRHLVLACHYDS
 KYFSHWNNRVFVGATDSAVPCAMMLELARALDKLLSLKTVSDSKPDLQLIFFDG
 EEAFLHWSPQDSLYGSRHLAAKMASTPHPPGARGTSQLHGMDLLVLLDLIGAPNPT
 FPNFFPNSARWFERLQAIEHELHELGLLDKHSLEGRYFQNYSGGVIQDDHIPFLRR
 GVPVLHLIPSPFPEVWHTMDDNEENLDESTIDNLNKILQVFVLEYLHL

GENE INFORMATION

Gene Name [QPCT glutaminyl-peptide cyclotransferase \[Homo sapiens \]](#)

Official Symbol [QPCT](#)

Synonyms [QPCT](#); glutaminyl-peptide cyclotransferase; [GCT](#); glutaminyl cyclase; [QC](#); [EC](#); glutamyl cyclase; glutaminyl-tRNA cyclotransferase; [sQC](#);

Gene ID [25797](#)

mRNA Refseq [NM_012413](#)

Protein Refseq [NP_036545](#)

MIM [607065](#)

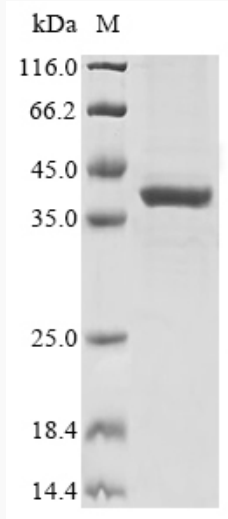
UniProt ID [Q16769](#)

 Tel: 1-631-559-9269 1-516-512-3133

 Email: info@creative-biomart.com  Fax: 1-631-938-8127

 45-1 Ramsey Road, Shirley, NY 11967, USA

SDS-PAGE



 Tel: 1-631-559-9269 1-516-512-3133

 Email: info@creative-biomart.com  Fax: 1-631-938-8127

 45-1 Ramsey Road, Shirley, NY 11967, USA