

Recombinant Human QPCTL Protein, His&Flag tagged

Cat. No. QPCTL-15H Lot. No. (See product label)

SPECIFICATION

Product Overview	Recombinant protein of human glutaminyl-peptide cyclotransferase-like (QPCTL), transcript variant 1, active region with I73N and C369A mutations, expressed in human cells.
Species	Human
Source	HEK293T
Description	Responsible for the biosynthesis of pyroglutamyl peptides.
Molecular Weight	39 kDa
Purity	> 80% as determined by SDS-PAGE and Coomassie blue staining
Notes	For testing in cell culture applications, please filter before use. Note that you may experience some loss of protein during the filtration process.
Stability	Stable for 12 months from the date of receipt of the product under proper storage and handling conditions. Avoid repeated freeze-thaw cycles.
Storage	Store at -80 centigrade.
Storage Buffer	PBS, pH 7.4, 10% glycerol
Concentration	>0.05 µg/µL as determined by microplate BCA method

 Tel: 1-631-559-9269 1-516-512-3133

 Email: info@creative-biomart.com  Fax: 1-631-938-8127

 45-1 Ramsey Road, Shirley, NY 11967, USA

Shipping Dry Ice

GENE INFORMATION

Gene Name QPCTL glutaminyl-peptide cyclotransferase like [Homo sapiens (human)]

Official Symbol QPCTL

Synonyms QPCTL; glutaminyl-peptide cyclotransferase-like; glutaminyl-peptide cyclotransferase-like protein; FLJ20084; glutaminyl cyclase like; isoQC; glutaminyl cyclase-like; golgi-resident glutaminyl-peptide cyclotransferase; gQC

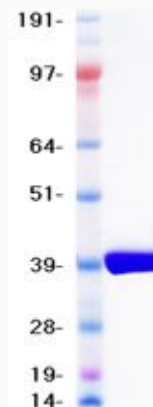
Gene ID 54814

mRNA Refseq NM_001163377

Protein Refseq NP_060129

UniProt ID Q9NXS2

SDS-PAGE



 Tel: 1-631-559-9269 1-516-512-3133

 Email: info@creative-biomart.com  Fax: 1-631-938-8127

 45-1 Ramsey Road, Shirley, NY 11967, USA