

# Recombinant Mouse QPCTL Protein, His-Avi-tagged, Biotinylated

Cat. No. QPCTL-7323M Lot. No. (See product label)

## SPECIFICATION

<b>Product Overview</b>	Biotinylated recombinant Mouse QPCTL Protein with His-Avi tag was expressed in HEK293.
<b>Species</b>	Mouse
<b>Source</b>	HEK293
<b>ProteinLength</b>	60-383 aa
<b>Description</b>	Predicted to enable glutaminyl-peptide cyclotransferase activity and zinc ion binding activity. Predicted to be located in Golgi apparatus. Orthologous to human QPCTL (glutaminyl-peptide cyclotransferase like).
<b>Molecular Mass</b>	39 kDa
<b>AASequence</b>	<p>HHHHHHHHGSGLNDFEFAQKIEWHEVEEMSRSDLRVPLIGSLSEAKLRLVVGQLD  PQRLWGTFLRPLLIVRPPGSSGNLQVRKFLEATLQSL SAGWHVELDPFTASTPLGPL  DFGNVVATLDPGAARHLTLACHYDSKFFPPGLPPFVGATDSAVPCALLLELVQALDA  MLSRIKQQAAPVTLQLLFLDGEEALKEWGPKDSLYGSRHLAQIMESIPHSPGPTRIQ  AIELFVLLDLLGASSPIFFSHFPRTARWFQRLRSIEKRLHRLNLLQSHQPQEVMYFQPG  EPPGPVEDDHIPFLRRGVPVLHLIATPFPAVWHTPADTEANLHPPTVHNL SRILAVFL  AEYLGL</p>
<b>Endotoxin</b>	<1EU/μg by LAL

 Tel: 1-631-559-9269 1-516-512-3133

 Email: [info@creative-biomart.com](mailto:info@creative-biomart.com)  Fax: 1-631-938-8127

 45-1 Ramsey Road, Shirley, NY 11967, USA

<b>Purity</b>	>90% by SDS-PAGE
<b>Labeling efficiency</b>	2.01 by HABA
<b>Storage</b>	Store it under sterile conditions at -20 to -80 centigrade. It is recommended that the protein be aliquoted for optimal storage. Avoid repeated freeze-thaw cycles.
<b>Storage Buffer</b>	Sterile PBS, pH7.4
<b>Concentration</b>	0.69 mg/mL by BCA
<b>Conjugation</b>	Biotin

## GENE INFORMATION

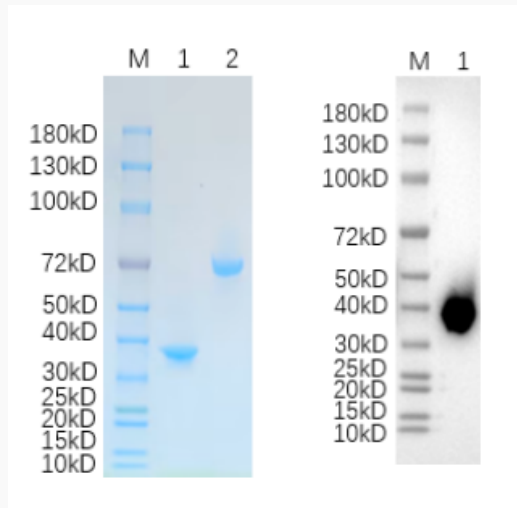
<b>Gene Name</b>	Qpctl glutaminyl-peptide cyclotransferase-like [ <i>Mus musculus</i> (house mouse) ]
<b>Official Symbol</b>	QPCTL
<b>Synonyms</b>	QPCTL; glutaminyl-peptide cyclotransferase-like; glutaminyl-peptide cyclotransferase-like protein; isoQC; golgi-resident glutaminyl-peptide cyclotransferase; gQC; BB101812; 1810019P04Rik
<b>Gene ID</b>	67369
<b>mRNA Refseq</b>	NM_026111
<b>Protein Refseq</b>	NP_080387
<b>UniProt ID</b>	Q8BH73

 Tel: 1-631-559-9269 1-516-512-3133

 Email: [info@creative-biomart.com](mailto:info@creative-biomart.com)  Fax: 1-631-938-8127

 45-1 Ramsey Road, Shirley, NY 11967, USA

**SDS-PAGE and WB**



Reducing 4%-20% SDS-PAGE (CBB stained) and WB (Anti-His Mouse Monoclonal antibody) profiles of QPCTL. 1. QPCTL: 1  $\mu$ g 2. BSA: 1  $\mu$ g

 Tel: 1-631-559-9269 1-516-512-3133

 Email: [info@creative-biomart.com](mailto:info@creative-biomart.com)  Fax: 1-631-938-8127

 45-1 Ramsey Road, Shirley, NY 11967, USA