

Recombinant Human RAB11A, Member RAS Oncogene Family, His-tagged

Cat. No. RAB11A-2480H **Lot. No.** (See product label)

SPECIFICATION

Product Overview	Recombinant human RAB11A, fused to His-tag at N-terminus, was expressed in <i>E.coli</i> and purified by using conventional chromatography techniques. MW = 28.1 kDa (249aa).
Species	Human
Source	E.coli
Description	Ras-related protein Rab-11A, also known as RAB11A, belongs to the small GTPase superfamily, Rab family. It is associated with both constitutive and regulated secretory pathways, and may be involved in protein transport. RAB11A is a known marker for protein trafficking, sorting, and recycling in the endosomal pathway.
Form	Liquid. In 20mM Tris-HCl buffer (pH 8.0) containing 1mM DTT, 20% glycerol, 1mM EDTA.
Purity	> 90% by SDS – PAGE.
Concentration	1 mg/ml (determined by Bradford assay).
Sequences Of Amino Acids	MRGSHHHHHH GMASMTGGQQ MGRDLYDDDD KDRWGSMGTR DDEYDYLFKV VLIGDSGVGK SNLLSRFTRN EFNLESKSTI GVEFATRSIQ VDGKTIKAQI WDTAGQERYR AITSAYYRGA VGALLVYDIA KHLTYENVER WLKELRDHAD SNIVIMLVGN KSDLRHLRAV PTDEARAF AE KNGLSFIETS ALDSTNVEAA

 Tel: 1-631-559-9269 1-516-512-3133

 Email: info@creative-biomart.com  Fax: 1-631-938-8127

 45-1 Ramsey Road, Shirley, NY 11967, USA

FQTILTEIYR IVSQKQMSDR RENDMSPSNN VVPIHVPPTT ENKPKVQCC.

Storage

Can be stored at +4°C short term (1-2 weeks). For long term storage, aliquot and store at -20°C or -70°C. Avoid repeated freezing and thawing cycles.

GENE INFORMATION

Gene Name

RAB11A RAB11A, member RAS oncogene family [Homo sapiens]

Synonyms

RAB11A; RAB11A, member RAS oncogene family; YL8; MGC1490; RAB 11A, member oncogene family; ras-related protein Rab-11A; rab-11; Ras-related protein Rab-11A; Rab-11

Gene ID

8766

mRNA Refseq

NM_004663

Protein Refseq

NP_004654

MIM

605570

UniProt ID

P62491

Chromosome Location

15q22.31

Pathway

Endocytosis; Vasopressin-regulated water reabsorption

Function

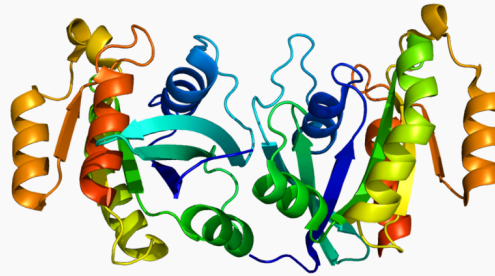
GTP binding; GTPase activity; nucleotide binding; protein binding; syntaxin binding; transporter activity

 Tel: 1-631-559-9269 1-516-512-3133

 Email: info@creative-biomart.com  Fax: 1-631-938-8127

 45-1 Ramsey Road, Shirley, NY 11967, USA

PDB rendering based
on 1oiv.



 Tel: 1-631-559-9269 1-516-512-3133

 Email: info@creative-biomart.com  Fax: 1-631-938-8127

 45-1 Ramsey Road, Shirley, NY 11967, USA