

## Recombinant Human RAB11A Protein, Myc/DDK-tagged, C13 and N15-labeled

Cat. No. RAB11A-3341H Lot. No. (See product label)

### SPECIFICATION

<b>Product Overview</b>	RAB11A MS Standard C13 and N15-labeled recombinant protein (NP_004654) with a C-terminal MYC/DDK tag, was expressed in HEK293 cells.
<b>Species</b>	Human
<b>Source</b>	HEK293
<b>Description</b>	The protein encoded by this gene belongs to the Rab family of the small GTPase superfamily. It is associated with both constitutive and regulated secretory pathways, and may be involved in protein transport. Two transcript variants encoding different isoforms have been found for this gene.
<b>Molecular Mass</b>	24.4 kDa
<b>AA Sequence</b>	MGTRDDEYDYLFKVVLLIGDSGVGKSNLLSRFTRNEFNLESKSTIGVEFATRSIQVDG KTIKAQIWDTAGQERYRAITSAYYRGAVGALLVYDIAKHLTYENVERWLKELRDHAD SNIVIMLVGNKSDLRHLRAVPTDEARAFKNGLSFIETSALDSTNVEAAFQILTEIY RIVSQKQMSDRRENDMSPSNNVPIHVPPTTENKPKVQCCQNITRTRPLEQKLISEE DLAANDILDYKDDDDKV
<b>Purity</b>	> 80% as determined by SDS-PAGE and Coomassie blue staining
<b>Stability</b>	Stable for 3 months from receipt of products under proper storage and handling conditions.

 Tel: 1-631-559-9269 1-516-512-3133

 Email: [info@creative-biomart.com](mailto:info@creative-biomart.com)  Fax: 1-631-938-8127

 45-1 Ramsey Road, Shirley, NY 11967, USA

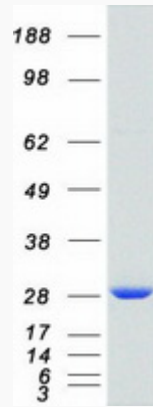
<b>Storage</b>	Store at -80 centigrade. Avoid repeated freeze-thaw cycles.
<b>Concentration</b>	50 µg/mL as determined by BCA
<b>Storage Buffer</b>	100 mM glycine, 25 mM Tris-HCl, pH 7.3.
<b>GENE INFORMATION</b>	
<b>Gene Name</b>	RAB11A RAB11A, member RAS oncogene family [ Homo sapiens (human) ]
<b>Official Symbol</b>	RAB11A
<b>Synonyms</b>	RAB11A; RAB11A, member RAS oncogene family; ras-related protein Rab-11A; YL8; rab-11; RAB 11A, member oncogene family; MGC1490;
<b>Gene ID</b>	8766
<b>mRNA Refseq</b>	NM_004663
<b>Protein Refseq</b>	NP_004654
<b>MIM</b>	605570
<b>UniProt ID</b>	P62491

 Tel: 1-631-559-9269 1-516-512-3133

 Email: [info@creative-biomart.com](mailto:info@creative-biomart.com)  Fax: 1-631-938-8127

 45-1 Ramsey Road, Shirley, NY 11967, USA

**SDS-PAGE**



 Tel: 1-631-559-9269 1-516-512-3133

 Email: [info@creative-biomart.com](mailto:info@creative-biomart.com)  Fax: 1-631-938-8127

 45-1 Ramsey Road, Shirley, NY 11967, USA