

Recombinant Human RAB11A Protein (Met1-Glu162), N-His tagged

Cat. No. RAB11A-6659H **Lot. No.** (See product label)

SPECIFICATION

Product Overview	Recombinant human RAB11A (Met1-Glu162) fused with the N-His tag was expressed in E. coli.
Species	Human
Source	E.coli
ProteinLength	Met1-Glu162
Form	Lyophilized powder/frozen liquid
Molecular Mass	20.55 kDa
Purity	> 90 % as determined by SDS-PAGE
Notes	For research use only.
Storage	Use a manual defrost freezer and avoid repeated freeze thaw cycles. Store at 2 to 8 centigrade for one week. Store at -20 to -80 centigrade for twelve months from the date of receipt.
Storage Buffer	0.01M PBS, pH 7.4, 0.02 % NLS
Reconstitution	Reconstitute in sterile water for a stock solution.

 Tel: 1-631-559-9269 1-516-512-3133

 Email: info@creative-biomart.com  Fax: 1-631-938-8127

 45-1 Ramsey Road, Shirley, NY 11967, USA

Shipping

They are shipped out with dry ice/blue ice unless customers require otherwise.

GENE INFORMATION
Gene Name

RAB11A RAB11A, member RAS oncogene family [Homo sapiens (human)]

Official Symbol

RAB11A

Synonyms

RAB11A; RAB11A, member RAS oncogene family; ras-related protein Rab-11A; YL8; rab-11; RAB 11A, member oncogene family; MGC1490;

Gene ID

8766

mRNA Refseq

NM_001206836

Protein Refseq

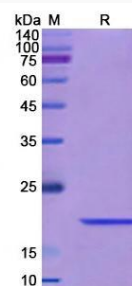
NP_001193765

MIM

605570

UniProt ID

P62491

SDS-PAGE


 Tel: 1-631-559-9269 1-516-512-3133

 Email: info@creative-biomart.com  Fax: 1-631-938-8127

 45-1 Ramsey Road, Shirley, NY 11967, USA