

Recombinant Full Length Human RAB11B Protein, C-Flag-tagged

Cat. No. RAB11B-1330HFL **Lot. No.** (See product label)

SPECIFICATION

Product Overview	Recombinant Full Length Human RAB11B Protein, fused to Flag-tag at C-terminus, was expressed in Mammalian cells.
Species	Human
Source	Mammalian Cells
Description	The Ras superfamily of small GTP-binding proteins, which includes the Ras, Rho, Rap, and Rab families, is involved in controlling a diverse set of essential cellular functions. The Rab family, including RAB11B, appears to play a critical role in regulating exocytotic and endocytotic pathways.
Form	25 mM Tris HCl, pH 7.3, 100 mM glycine, 10% glycerol.
Molecular Mass	24.3 kDa
AA Sequence	MGTRDDEYDYLFKVVLLIGDSGVGKSNLLSRFTRNEFNLESKSTIGVEFATRSIQVDG KTIKAQIWDTAGQ ERYRAITSAYYRGAVGALLVYDIAKHLTYENVERWLKELRDHAD SNIVIMLVGNKSDLRHLRAVPTDEAR AFAEKNNLSFIETSALDSTNVEEAFKNILTEIY RIVSQKQIADRAAHDESPGNNVVDISVPPTTDGQKPN KLQCCQNLTRTRPLEQKLISEEDLAANDILDYKDDDDKV
Purity	> 80% as determined by SDS-PAGE and Coomassie blue staining.

 Tel: 1-631-559-9269 1-516-512-3133

 Email: info@creative-biomart.com  Fax: 1-631-938-8127

 45-1 Ramsey Road, Shirley, NY 11967, USA

Stability	Stable for 12 months from the date of receipt of the product under proper storage and handling conditions. Avoid repeated freeze-thaw cycles.
Storage	Store at -80 centigrade.
Concentration	>50 ug/mL as determined by microplate BCA method.
Preparation	Recombinant protein was captured through anti-DDK affinity column followed by conventional chromatography steps.
Protein Families	Druggable Genome
Protein Pathways	Endocytosis
Full Length	Full L.

GENE INFORMATION

Gene Name	RAB11B RAB11B, member RAS oncogene family [Homo sapiens (human)]
Official Symbol	RAB11B
Synonyms	H-YPT3; NDAGSCW
Gene ID	9230
mRNA Refseq	NM_004218.4
Protein Refseq	NP_004209.2
MIM	604198

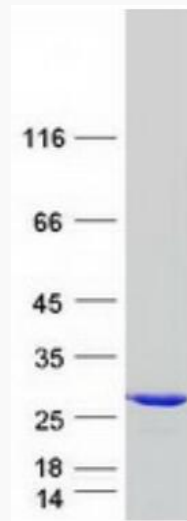
 Tel: 1-631-559-9269 1-516-512-3133

 Email: info@creative-biomart.com  Fax: 1-631-938-8127

 45-1 Ramsey Road, Shirley, NY 11967, USA

UniProt ID

Q15907



Coomassie blue staining of purified RAB11B protein.

 Tel: 1-631-559-9269 1-516-512-3133

 Email: info@creative-biomart.com  Fax: 1-631-938-8127

 45-1 Ramsey Road, Shirley, NY 11967, USA