

Recombinant Human RAB11B Protein, Myc/DDK-tagged, C13 and N15-labeled

Cat. No. RAB11B-4526H **Lot. No.** (See product label)

SPECIFICATION

Product Overview	RAB11B MS Standard C13 and N15-labeled recombinant protein (NP_004209) with a C-terminal MYC/DDK tag, was expressed in HEK293 cells.
Species	Human
Source	HEK293
Description	The Ras superfamily of small GTP-binding proteins, which includes the Ras, Ral, Rho, Rap, and Rab families, is involved in controlling a diverse set of essential cellular functions. The Rab family, including RAB11B, appears to play a critical role in regulating exocytotic and endocytotic pathways.
Molecular Mass	24.5 kDa
AA Sequence	MGTRDDEYDYLFKVVLLIGDSGVGKSNLLSRFTRNEFNLESKSTIGVEFATRSIQVDG KTIKAQIWDTAGQERYRAITSAYYRGAVGALLVYDIAKHLTYENVERWLKELRDHAD SNIVIMLVGNKSDLRHLRAVPTDEARAFKNNLSFIETSALDSTNVEEAFKNILTEIY RIVSQKQIADRAAHDESPGNNVVDISVPPTTDGQKPNKLQCCQNLTRTRPLEQKLIS EEDLAANDILDYKDDDDKV
Purity	> 80% as determined by SDS-PAGE and Coomassie blue staining
Stability	Stable for 3 months from receipt of products under proper storage and handling conditions.

 Tel: 1-631-559-9269 1-516-512-3133

 Email: info@creative-biomart.com  Fax: 1-631-938-8127

 45-1 Ramsey Road, Shirley, NY 11967, USA

Storage Store at -80 centigrade. Avoid repeated freeze-thaw cycles.

Concentration 50 µg/mL as determined by BCA

Storage Buffer 100 mM glycine, 25 mM Tris-HCl, pH 7.3.

GENE INFORMATION

Gene Name RAB11B RAB11B, member RAS oncogene family [Homo sapiens (human)]

Official Symbol RAB11B

Synonyms RAB11B; RAB11B, member RAS oncogene family; ras-related protein Rab-11B; H YPT3; GTP-binding protein YPT3; RAB11B, member of RAS oncogene family; H-YPT3; MGC133246;

Gene ID 9230

mRNA Refseq NM_004218

Protein Refseq NP_004209

MIM 604198

UniProt ID Q15907

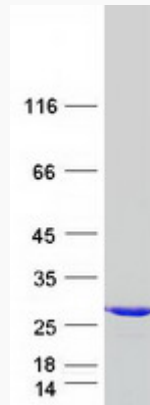
 Tel: 1-631-559-9269 1-516-512-3133

 Email: info@creative-biomart.com  Fax: 1-631-938-8127

 45-1 Ramsey Road, Shirley, NY 11967, USA



SDS-PAGE



Tel: 1-631-559-9269 1-516-512-3133

Email: info@creative-biomart.com Fax: 1-631-938-8127

45-1 Ramsey Road, Shirley, NY 11967, USA