

Recombinant Human RAB12 Protein, Myc/DDK-tagged, C13 and N15-labeled

Cat. No. RAB12-5912H **Lot. No.** (See product label)

SPECIFICATION

Product Overview	RAB12 MS Standard C13 and N15-labeled recombinant protein (NP_001020471) with a C-terminal MYC/DDK tag, was expressed in HEK293 cells.
Species	Human
Source	HEK293
Description	RAB12 (RAB12, Member RAS Oncogene Family) is a Protein Coding gene. Among its related pathways are RAB GEFs exchange GTP for GDP on RABs and Metabolism of proteins. Gene Ontology (GO) annotations related to this gene include GTP binding and GDP binding. An important paralog of this gene is RAB3C.
Molecular Mass	27.1 kDa
AA Sequence	MDPGAALQRRAGGGGGLGAGSPALSGGQRRRKQPPRPADFKLQVIIIIGSRGVGK TSLMERFTDDTFCEACKSTVGVDFKIKTVELRGKKIRLQIWDTAGQERFNSITSAYR SAKGILVYDITKKETFDDLPKWMKIDKYASEDAELLLVGNKLCETDREITRQQGE KFAQQITGMRFCESAKDNFNVDEIFLKLVDILKKMPLDILRNELNSILSLQPEPEIP PELPPPRPHVRCCTRTRPLEQKLISEEDLAANDILDYKDDDDKV
Purity	> 80% as determined by SDS-PAGE and Coomassie blue staining
Stability	Stable for 3 months from receipt of products under proper storage and handling conditions.

 Tel: 1-631-559-9269 1-516-512-3133

 Email: info@creative-biomart.com  Fax: 1-631-938-8127

 45-1 Ramsey Road, Shirley, NY 11967, USA

Storage	Store at -80 centigrade. Avoid repeated freeze-thaw cycles.
----------------	---

Concentration	50 µg/mL as determined by BCA
----------------------	-------------------------------

Storage Buffer	100 mM glycine, 25 mM Tris-HCl, pH 7.3.
-----------------------	---

GENE INFORMATION

Gene Name	RAB12 RAB12, member RAS oncogene family [Homo sapiens (human)]
------------------	--

Official Symbol	RAB12
------------------------	-------

Synonyms	RAB12; RAB12, member RAS oncogene family; ras-related protein Rab-12; putative Ras-related protein Rab-12
-----------------	---

Gene ID	201475
----------------	--------

mRNA Refseq	NM_001025300
--------------------	--------------

Protein Refseq	NP_001020471
-----------------------	--------------

MIM	616448
------------	--------

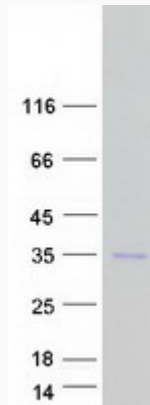
UniProt ID	Q6IQ22
-------------------	--------

 Tel: 1-631-559-9269 1-516-512-3133

 Email: info@creative-biomart.com  Fax: 1-631-938-8127

 45-1 Ramsey Road, Shirley, NY 11967, USA

SDS-PAGE



 Tel: 1-631-559-9269 1-516-512-3133

 Email: info@creative-biomart.com  Fax: 1-631-938-8127

 45-1 Ramsey Road, Shirley, NY 11967, USA