

# Recombinant Full Length Human RAB13 Protein, C-Flag-tagged

**Cat. No.** RAB13-2038HFL    **Lot. No.** (See product label)

## SPECIFICATION

<b>Product Overview</b>	Recombinant Full Length Human RAB13 Protein, fused to Flag-tag at C-terminus, was expressed in Mammalian cells.
<b>Species</b>	Human
<b>Source</b>	Mammalian Cells
<b>ProteinLength</b>	1-203 a.a.
<b>Description</b>	This gene is a member of the Rab family of small G proteins and plays a role in regulating membrane trafficking between trans-Golgi network (TGN) and recycling endosomes (RE). The encoded protein is involved in the assembly of tight junctions, which are components of the apical junctional complex (AJC) of epithelial cells. The AJC plays a role in forming a barrier between luminal contents and the underlying tissue. Additional functions associated with the protein include endocytic recycling of occludin, regulation of epithelial cell scattering, neuronal regeneration and regulation of neurite outgrowth. Alternately spliced transcript variants have been observed for this gene. A pseudogene associated with this gene is located on chromosome 12.
<b>Form</b>	25 mM Tris HCl, pH 7.3, 100 mM glycine, 10% glycerol.
<b>Molecular Mass</b>	22.6 kDa
<b>AA Sequence</b>	MAKAYDHLFKLLLLIGDSGVGKTC LIIRFAEDN FNNTYISTIGIDFKIRTVDIEGKKIKLQV

 Tel: 1-631-559-9269    1-516-512-3133

 Email: [info@creative-biomart.com](mailto:info@creative-biomart.com)     Fax: 1-631-938-8127

 45-1 Ramsey Road, Shirley, NY 11967, USA

WDTAGQERF KTITTAYYRGAMGIILVYDITDEKSFENIQNWMKSIKENASAGVERLLL  
 GNKCDMEAKRKVQKEQADKLA REHGIRFFETSASSSMNVDEAFSSLARDILLKSGG  
 RRSNGNGNKPPSTDLKTCDDKNTNKCSLG TRTRPLEQKLISEEDLAANDILDYKDDD  
 DKV

**Purity** > 80% as determined by SDS-PAGE and Coomassie blue staining.

**Stability** Stable for 12 months from the date of receipt of the product under proper storage and handling conditions. Avoid repeated freeze-thaw cycles.

**Storage** Store at -80 centigrade.

**Concentration** >50 ug/mL as determined by microplate BCA method.

**Preparation** Recombinant protein was captured through anti-DDK affinity column followed by conventional chromatography steps.

**Protein Families** Druggable Genome

**Protein Pathways** Tight junction

**Full Length** Full L.

## GENE INFORMATION

**Gene Name** RAB13 RAB13, member RAS oncogene family [ Homo sapiens (human) ]

**Official Symbol** RAB13

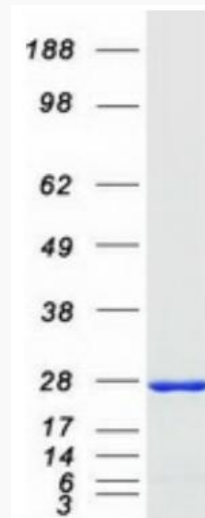
**Synonyms** GIG4

 Tel: 1-631-559-9269 1-516-512-3133

 Email: [info@creative-biomart.com](mailto:info@creative-biomart.com)  Fax: 1-631-938-8127

 45-1 Ramsey Road, Shirley, NY 11967, USA

Gene ID	5872
mRNA Refseq	NM_002870.5
Protein Refseq	NP_002861.1
MIM	602672
UniProt ID	P51153



Coomassie blue staining of purified RAB13 protein.

Tel: 1-631-559-9269 1-516-512-3133

Email: [info@creative-biomart.com](mailto:info@creative-biomart.com) Fax: 1-631-938-8127

45-1 Ramsey Road, Shirley, NY 11967, USA