

Recombinant Human RAB27A Protein, Myc/DDK-tagged, C13 and N15-labeled

Cat. No. RAB27A-3364H **Lot. No.** (See product label)

SPECIFICATION

Product Overview	RAB27A MS Standard C13 and N15-labeled recombinant protein (NP_004571) with a C-terminal MYC/DDK tag, was expressed in HEK293 cells.
Species	Human
Source	HEK293
Description	The protein encoded by this gene belongs to the small GTPase superfamily, Rab family. The protein is membrane-bound and may be involved in protein transport and small GTPase mediated signal transduction. Mutations in this gene are associated with Griscelli syndrome type 2. Alternative splicing occurs at this locus and four transcript variants encoding the same protein have been identified.
Molecular Mass	24.9 kDa
AA Sequence	MSDGDYDYLIKFLALGDSGVGKTSVLYQYTDGKFNSKFITTVGIDFREKRVVYRASG PDGATGRGQRIHLQLWDTAGQERFRSLTTAFFRDAMGFLLLFDLTNEQSFLNVRNW ISQLQMHAYCENPDIVLCGNKSDLEDQRVVKEEEAIALAEKYGIPYFETSAANGTNIS QAIEMLLDLIMKRMERCVDKSWIPEGVVRSNGHASTDQLSEEKEKGACGCTRTRPL EQKLISEEDLAANDILDYKDDDDKV
Purity	> 80% as determined by SDS-PAGE and Coomassie blue staining
Stability	Stable for 3 months from receipt of products under proper storage and handling

 Tel: 1-631-559-9269 1-516-512-3133

 Email: info@creative-biomart.com  Fax: 1-631-938-8127

 45-1 Ramsey Road, Shirley, NY 11967, USA

conditions.

Storage Store at -80 centigrade. Avoid repeated freeze-thaw cycles.

Concentration 50 µg/mL as determined by BCA

Storage Buffer 100 mM glycine, 25 mM Tris-HCl, pH 7.3.

GENE INFORMATION

Gene Name [RAB27A](#) [RAB27A, member RAS oncogene family \[Homo sapiens \(human\) \]](#)

Official Symbol [RAB27A](#)

Synonyms [RAB27A](#); [RAB27A, member RAS oncogene family](#); [ras-related protein Rab-27A](#); [GS2](#); [HsT18676](#); [RAB27](#); [RAM](#); [rab-27](#); [GTP-binding protein Ram](#); [MGC117246](#);

Gene ID [5873](#)

mRNA Refseq [NM_004580](#)

Protein Refseq [NP_004571](#)

MIM [603868](#)

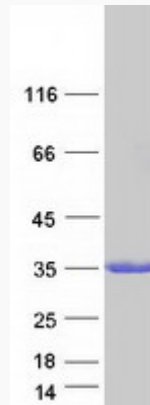
UniProt ID [P51159](#)

 Tel: 1-631-559-9269 1-516-512-3133

 Email: info@creative-biomart.com  Fax: 1-631-938-8127

 45-1 Ramsey Road, Shirley, NY 11967, USA

SDS-PAGE



 Tel: 1-631-559-9269 1-516-512-3133

 Email: info@creative-biomart.com  Fax: 1-631-938-8127

 45-1 Ramsey Road, Shirley, NY 11967, USA