

Recombinant Human RAB2A Protein, His-GST-tagged

Cat. No. RAB2A-001H Lot. No. (See product label)

SPECIFICATION

Product Overview	Recombinant Human RAB2A Protein (1-212 aa (full-length)) with 6xHis-GST tags was expressed in E. coli.
Species	Human
Source	E.coli
ProteinLength	1-212
Description	The protein encoded by this gene belongs to the Rab family, members of which are small molecular weight guanosine triphosphatases (GTPases) that contain highly conserved domains involved in GTP binding and hydrolysis. The Rabs are membrane-bound proteins, involved in vesicular fusion and trafficking. This protein is a resident of pre-Golgi intermediates, and is required for protein transport from the endoplasmic reticulum (ER) to the Golgi complex. Alternatively spliced transcript variants encoding different isoforms have been found for this gene.
Molecular Mass	52.5 kDa
Purity	>95% confirmed by 10% SDS-PAGE stained with Coomassie Blue (CB), immunoblotting with anti-6xHis (WB).
Applications	ELISA, Western Blot, Antibody Production, Protein array
Quality Control Test	10% SDS-PAGE stained with Coomassie Blue (CB), immunoblotting with anti-GST

 Tel: 1-631-559-9269 1-516-512-3133

 Email: info@creative-biomart.com  Fax: 1-631-938-8127

 45-1 Ramsey Road, Shirley, NY 11967, USA

monoclonal and peptide fingerprinting by MALDI-TOF mass spectrometry.

Storage

Store working aliquots at 4 centigrade for up to one week. For extended storage, conserve at -80 centigrade.

Expiry

12 months from the date of purchase, if it is properly stored.

Storage Buffer

Phosphate-Buffered Saline (PBS), pH 7.4. No preservatives added.

Shipping

Dry Ice

GENE INFORMATION

Gene Name

RAB2A RAB2A, member RAS oncogene family [Homo sapiens (human)]

Official Symbol

RAB2A

Synonyms

RAB2A; RAB2A, member RAS oncogene family; LHX; RAB2; ras-related protein Rab-2A; RAB2, member RAS oncogene family; small GTP binding protein RAB2A

Gene ID

5862

mRNA Refseq

NM_002865

Protein Refseq

NP_002856

MIM

179509

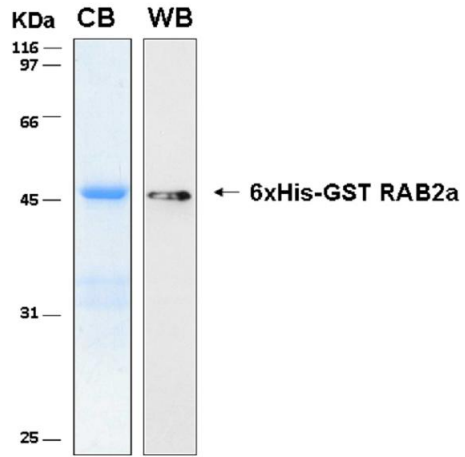
UniProt ID

P61019

 Tel: 1-631-559-9269 1-516-512-3133

 Email: info@creative-biomart.com  Fax: 1-631-938-8127

 45-1 Ramsey Road, Shirley, NY 11967, USA



Tel: 1-631-559-9269 1-516-512-3133

Email: info@creative-biomart.com Fax: 1-631-938-8127

45-1 Ramsey Road, Shirley, NY 11967, USA