

## Recombinant Human RAB2A Protein, His-tagged

Cat. No. RAB2A-002H Lot. No. (See product label)

### SPECIFICATION

<b>Product Overview</b>	Recombinant Human RAB2A Protein (1-212 aa (full-length)) with 6xHis tag was expressed in E. coli.
<b>Species</b>	Human
<b>Source</b>	E.coli
<b>ProteinLength</b>	1-212
<b>Description</b>	<p>The protein encoded by this gene belongs to the Rab family, members of which are small molecular weight guanosine triphosphatases (GTPases) that contain highly conserved domains involved in GTP binding and hydrolysis. The Rabs are membrane-bound proteins, involved in vesicular fusion and trafficking. This protein is a resident of pre-Golgi intermediates, and is required for protein transport from the endoplasmic reticulum (ER) to the Golgi complex. Alternatively spliced transcript variants encoding different isoforms have been found for this gene.</p>
<b>Molecular Mass</b>	26.7 kDa
<b>Purity</b>	>95% confirmed by 10% SDS-PAGE stained with Coomassie Blue (CB), immunoblotting with anti-6xHis (WB).
<b>Applications</b>	ELISA, Western Blot, Antibody Production, Protein array
<b>Quality Control Test</b>	10% SDS-PAGE stained with Coomassie Blue (CB), immunoblotting with anti-GST

 Tel: 1-631-559-9269 1-516-512-3133

 Email: [info@creative-biomart.com](mailto:info@creative-biomart.com)  Fax: 1-631-938-8127

 45-1 Ramsey Road, Shirley, NY 11967, USA

monoclonal and peptide fingerprinting by MALDI-TOF mass spectrometry.

**Storage**

Store working aliquots at 4 centigrade for up to one week. For extended storage, conserve at -80 centigrade.

**Expiry**

12 months from the date of purchase, if it is properly stored.

**Storage Buffer**

Phosphate-Buffered Saline (PBS), pH 7.4. No preservatives added.

**Shipping**

Dry Ice

## GENE INFORMATION

**Gene Name**

RAB2A RAB2A, member RAS oncogene family [ Homo sapiens (human) ]

**Official Symbol**

RAB2A

**Synonyms**

RAB2A; RAB2A, member RAS oncogene family; LHX; RAB2; ras-related protein Rab-2A; RAB2, member RAS oncogene family; small GTP binding protein RAB2A

**Gene ID**

5862

**mRNA Refseq**

NM\_002865

**Protein Refseq**

NP\_002856

**MIM**

179509

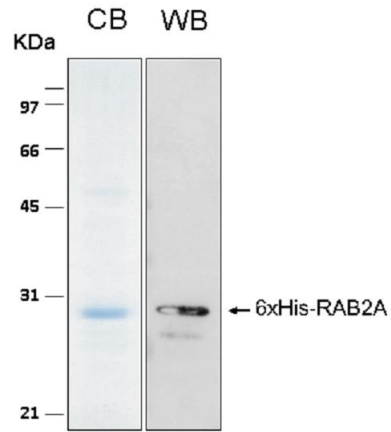
**UniProt ID**

P61019

 Tel: 1-631-559-9269 1-516-512-3133

 Email: [info@creative-biomart.com](mailto:info@creative-biomart.com)  Fax: 1-631-938-8127

 45-1 Ramsey Road, Shirley, NY 11967, USA



 Tel: 1-631-559-9269 1-516-512-3133

 Email: [info@creative-biomart.com](mailto:info@creative-biomart.com)  Fax: 1-631-938-8127

 45-1 Ramsey Road, Shirley, NY 11967, USA