

# Recombinant Full Length Human RAB2A Protein, C-Flag-tagged

**Cat. No.** RAB2A-1982HFL    **Lot. No.** (See product label)

## SPECIFICATION

<b>Product Overview</b>	Recombinant Full Length Human RAB2A Protein, fused to Flag-tag at C-terminus, was expressed in Mammalian cells.
<b>Species</b>	Human
<b>Source</b>	Mammalian Cells
<b>Description</b>	The protein encoded by this gene belongs to the Rab family, members of which are small molecular weight guanosine triphosphatases (GTPases) that contain highly conserved domains involved in GTP binding and hydrolysis. The Rabs are membrane-bound proteins, involved in vesicular fusion and trafficking. This protein is a resident of pre-Golgi intermediates, and is required for protein transport from the endoplasmic reticulum (ER) to the Golgi complex. Alternatively spliced transcript variants encoding different isoforms have been found for this gene.
<b>Form</b>	25 mM Tris HCl, pH 7.3, 100 mM glycine, 10% glycerol.
<b>Molecular Mass</b>	23.4 kDa
<b>AA Sequence</b>	MAYAYLFKYIIIGDTGVGKSCLLLQFTDKRFQPVHDLTIGVEFGARMITIDGKQIKLQIW DTAGQESFRS ITRSYYRGAAGALLVYDITRRDFTFNHLTTWLEDARQHSNSNMVIMLI GNKSDLESRRREVKKEEGEAFARE HGLIFMETSAKTASNVEEAFINTAKEIYEKIQEGV FDINNEANGIKIGPQHAATNATHAGNQQGGQQAGGG CC TRTRPLEQKLISEEDLAAN DILDYKDDDDKV

 Tel: 1-631-559-9269    1-516-512-3133

 Email: [info@creative-biomart.com](mailto:info@creative-biomart.com)     Fax: 1-631-938-8127

 45-1 Ramsey Road, Shirley, NY 11967, USA

<b>Purity</b>	> 80% as determined by SDS-PAGE and Coomassie blue staining.
<b>Stability</b>	Stable for 12 months from the date of receipt of the product under proper storage and handling conditions. Avoid repeated freeze-thaw cycles.
<b>Storage</b>	Store at -80 centigrade.
<b>Concentration</b>	>50 ug/mL as determined by microplate BCA method.
<b>Preparation</b>	Recombinant protein was captured through anti-DDK affinity column followed by conventional chromatography steps.
<b>Protein Families</b>	Druggable Genome
<b>Full Length</b>	Full L.

## GENE INFORMATION

<b>Gene Name</b>	RAB2A RAB2A, member RAS oncogene family [ Homo sapiens (human) ]
<b>Official Symbol</b>	RAB2A
<b>Synonyms</b>	LHX; RAB2
<b>Gene ID</b>	5862
<b>mRNA Refseq</b>	NM_002865.3
<b>Protein Refseq</b>	NP_002856.1
<b>MIM</b>	179509

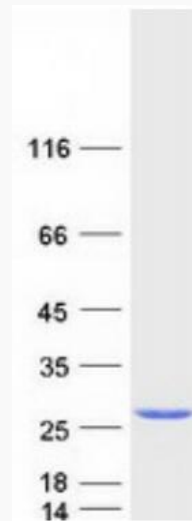
 Tel: 1-631-559-9269 1-516-512-3133

 Email: [info@creative-biomart.com](mailto:info@creative-biomart.com)  Fax: 1-631-938-8127

 45-1 Ramsey Road, Shirley, NY 11967, USA

UniProt ID

P61019



Coomassie blue staining of purified RAB2A protein.

 Tel: 1-631-559-9269 1-516-512-3133

 Email: [info@creative-biomart.com](mailto:info@creative-biomart.com)  Fax: 1-631-938-8127

 45-1 Ramsey Road, Shirley, NY 11967, USA