

Recombinant Human RAB2A Protein, Myc/DDK-tagged, C13 and N15-labeled

Cat. No. RAB2A-2090H Lot. No. (See product label)

SPECIFICATION

Product Overview	RAB2A MS Standard C13 and N15-labeled recombinant protein (NP_002856) with a C-terminal MYC/DDK tag, was expressed in HEK293 cells.
Species	Human
Source	HEK293
Description	The protein encoded by this gene belongs to the Rab family, members of which are small molecular weight guanosine triphosphatases (GTPases) that contain highly conserved domains involved in GTP binding and hydrolysis. The Rabs are membrane-bound proteins, involved in vesicular fusion and trafficking. This protein is a resident of pre-Golgi intermediates, and is required for protein transport from the endoplasmic reticulum (ER) to the Golgi complex. Alternatively spliced transcript variants encoding different isoforms have been found for this gene.
Molecular Mass	23.5 kDa
AA Sequence	MAYAYLFKYIIIGDTGVGKSCLLLQFTDKRFQPVHDLTIGVEFGARMITIDGKQIKLQIW DTAGQESFRSITRSYYRGAAGALLVYDITRRDTFNHLTTWLEDARQHSNSNMVIMLI GNKSDLESRRREVKKEEGEAFAREHGLIFMETSAKTASNVEEAFINTAKEIYEKIQEGV FDINNEANGIKIGPQHAATNATHAGNQQGGQQAGGGCCTRTRPLEQKLISEEDLAAN DILDYKDDDDKV
Purity	> 80% as determined by SDS-PAGE and Coomassie blue staining

 Tel: 1-631-559-9269 1-516-512-3133

 Email: info@creative-biomart.com  Fax: 1-631-938-8127

 45-1 Ramsey Road, Shirley, NY 11967, USA

Stability	Stable for 3 months from receipt of products under proper storage and handling conditions.
Storage	Store at -80 centigrade. Avoid repeated freeze-thaw cycles.
Concentration	50 µg/mL as determined by BCA
Storage Buffer	100 mM glycine, 25 mM Tris-HCl, pH 7.3.

GENE INFORMATION

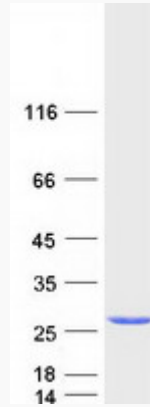
Gene Name	RAB2A RAB2A, member RAS oncogene family [Homo sapiens (human)]
Official Symbol	RAB2A
Synonyms	RAB2A; RAB2A, member RAS oncogene family; RAB2, RAB2, member RAS oncogene family; ras-related protein Rab-2A; small GTP binding protein RAB2A; RAB2, member RAS oncogene family; LHX; RAB2;
Gene ID	5862
mRNA Refseq	NM_002865
Protein Refseq	NP_002856
MIM	179509
UniProt ID	P61019

 Tel: 1-631-559-9269 1-516-512-3133

 Email: info@creative-biomart.com  Fax: 1-631-938-8127

 45-1 Ramsey Road, Shirley, NY 11967, USA

SDS-PAGE



 Tel: 1-631-559-9269 1-516-512-3133

 Email: info@creative-biomart.com  Fax: 1-631-938-8127

 45-1 Ramsey Road, Shirley, NY 11967, USA