

Recombinant Full Length Human RAB3A Protein, His-tagged

Cat. No. RAB3A-3586H Lot. No. (See product label)

SPECIFICATION

| | |
|---------------------------------|---|
| Product Overview | Recombinant human RAB3A protein, fused to His-tag at N-terminus, was expressed in E.coli and purified by using conventional chromatography techniques (1-220aa). |
| Species | Human |
| Source | E.coli |
| ProteinLength | 1-220 a.a. |
| Description | Rab3A belongs to the small GTPase superfamily, Rab family. It is a small, Ras-like GTPase expressed in neuroendocrine cells, in which it is associated with secretory vesicle membranes and regulates exocytosis. This protein could play a role in neurotransmitter release by regulating membrane flow in the nerve terminal. |
| Form | Liquid. 20mM Tris-HCl buffer (pH8.0) containing 20% glycerol, 0.1M NaCl, 1mM DTT |
| Molecular Weight | 27.1 kDa (240aa), confirmed by MALDI-TOF |
| Purity | > 90% by SDS - PAGE |
| Concentration | 0.5 mg/ml (determined by Bradford assay) |
| Sequences of amino acids | MGSSHHHHHH SSGLVPRGSH MASATDSRYG QKESDQNFY YMFKILIIIGN SSVGKTSFLF RYADDSFTPA FVSTVGIDFK VKTIYRNDKR IKLQIWDTAG QERYRTITTA YYRGAMGFIL MYDITNEESF NAVQDWSTQI KTYSWDNAQV |

 Tel: 1-631-559-9269 1-516-512-3133

 Email: info@creative-biomart.com  Fax: 1-631-938-8127

 45-1 Ramsey Road, Shirley, NY 11967, USA

LLVGNKCDME DERVVSSERG RQLADHLGFE FFEASAKDNI NVKQTFERLV
 DVICEKMSSES LDTADPAVTG AKQGPQLSDQ QVPPHQDCAC

Storage

Can be stored at +4°C short term (1-2 weeks). For long term storage, aliquot and store at -20°C or -70°C. Avoid repeated freezing and thawing cycles.

GENE INFORMATION

Gene Name

RAB3A RAB3A, member RAS oncogene family [Homo sapiens]

Official Symbol

RAB3A

Synonyms

RAB3A;RAB3A, member RAS oncogene family; ras-related protein Rab-3A;
 OTTHUMP00000174429; RAS-associated protein RAB3A; Ras-related protein Rab-3A

Gene ID

5864

mRNA Refseq

NM_002866

Protein Refseq

NP_002857

MIM

179490

UniProt ID

P20336

Chromosome Location

19p13.2

Function

ATPase activator activity; ATPase binding; GTP binding; GTPase activity; GTPase binding; nucleotide binding; protein C-terminus binding; protein binding

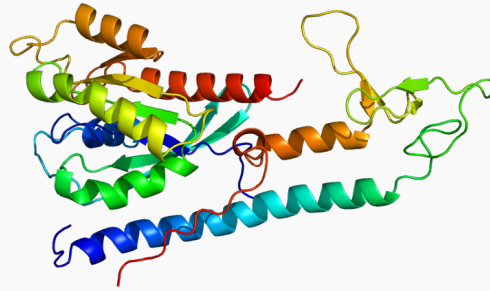
 Tel: 1-631-559-9269 1-516-512-3133

 Email: info@creative-biomart.com  Fax: 1-631-938-8127

 45-1 Ramsey Road, Shirley, NY 11967, USA



PDBrendering based
on 1zbd.



Tel: 1-631-559-9269 1-516-512-3133

Email: info@creative-biomart.com Fax: 1-631-938-8127

45-1 Ramsey Road, Shirley, NY 11967, USA