

Recombinant Full Length Human RAB3A Protein, C-Flag-tagged

Cat. No. RAB3A-773HFL **Lot. No.** (See product label)

SPECIFICATION

Product Overview	Recombinant Full Length Human RAB3A Protein, fused to Flag-tag at C-terminus, was expressed in Mammalian cells.
Species	Human
Source	Mammalian Cells
Description	Enables GTPase activity and myosin V binding activity. Involved in several processes, including acrosomal vesicle exocytosis; lysosome localization; and plasma membrane repair. Located in perinuclear region of cytoplasm.
Form	25 mM Tris HCl, pH 7.3, 100 mM glycine, 10% glycerol.
Molecular Mass	24.8 kDa
AA Sequence	MASATDSRYGQKESSDQNFDYMFKILIIGNSSVGKTSFLFRYADDSFTPAFVSTVGID FKVKTIYRNDKR IKLQIWDTAGQERYRTITTAYYRGAMGFILMYDITNEESFNAVQD WSTQIKTYSWDNAQVLLVGNKCDME DERVVSSERGRQLADHLGFEFFFEASAKDNI NVKQTFERLVDVICEKMSESLDTADPAVTGAKQGPQLSDQ QVPPHQDCACTRTRPLEQKLISEEDLAANDILDYKDDDDKV
Purity	> 80% as determined by SDS-PAGE and Coomassie blue staining.
Stability	Stable for 12 months from the date of receipt of the product under proper storage and

 Tel: 1-631-559-9269 1-516-512-3133

 Email: info@creative-biomart.com  Fax: 1-631-938-8127

 45-1 Ramsey Road, Shirley, NY 11967, USA



	handling conditions. Avoid repeated freeze-thaw cycles.
Storage	Store at -80 centigrade.
Concentration	>50 ug/mL as determined by microplate BCA method.
Preparation	Recombinant protein was captured through anti-DDK affinity column followed by conventional chromatography steps.
Protein Families	Druggable Genome
Full Length	Full L.

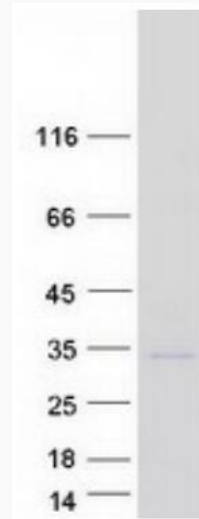
GENE INFORMATION

Gene Name	RAB3A RAB3A, member RAS oncogene family [Homo sapiens (human)]
Official Symbol	RAB3A
Gene ID	5864
mRNA Refseq	NM_002866.5
Protein Refseq	NP_002857.1
MIM	179490
UniProt ID	P20336

Tel: 1-631-559-9269 1-516-512-3133

Email: info@creative-biomart.com Fax: 1-631-938-8127

45-1 Ramsey Road, Shirley, NY 11967, USA



Coomassie blue staining of purified RAB3A protein.

 Tel: 1-631-559-9269 1-516-512-3133

 Email: info@creative-biomart.com  Fax: 1-631-938-8127

 45-1 Ramsey Road, Shirley, NY 11967, USA