

Active Recombinant Full Length Human RAB5C Protein, C-Flag-tagged

Cat. No. RAB5C-714HFL **Lot. No.** (See product label)

SPECIFICATION

Product Overview	Recombinant Full Length Human RAB5C Protein, fused to Flag-tag at C-terminus, was expressed in Mammalian cells.
Species	Human
Source	Mammalian Cells
Description	Members of the Rab protein family are small GTPases of the Ras superfamily that are thought to ensure fidelity in the process of docking and/or fusion of vesicles with their correct acceptor compartment.
Form	25 mM Tris HCl, pH 7.3, 100 mM glycine, 10% glycerol.
Bio-activity	Enzyme activity
Molecular Mass	23.3 kDa
AA Sequence	MAGRGGGAARPNGPAAGNKICQFKLVLLGESAVGKSSLVLRVFKGQFHEYQESTIGA AFLTQTVCLDDTTV KFEIWDTAGQERYHSLAPMYRGAQAAIVVYDITNTDTFARAK NWKELQRQASPNIVALAGNKADLAS KRAVEFQEAQAYADDNSLLFMETSAKTAM NVNEIFMAIAKKLPKNPQNATGAPGRNRGVLDLQENNPASR SQCCSNTRTRPLEQKLISEEDLAANDILDYKDDDDKV
Purity	> 80% as determined by SDS-PAGE and Coomassie blue staining.

 Tel: 1-631-559-9269 1-516-512-3133

 Email: info@creative-biomart.com  Fax: 1-631-938-8127

 45-1 Ramsey Road, Shirley, NY 11967, USA

Stability	Stable for 12 months from the date of receipt of the product under proper storage and handling conditions. Avoid repeated freeze-thaw cycles.
Storage	Store at -80 centigrade.
Concentration	>50 ug/mL as determined by microplate BCA method.
Preparation	Recombinant protein was captured through anti-DDK affinity column followed by conventional chromatography steps.
Protein Families	Druggable Genome
Protein Pathways	Endocytosis
Full Length	Full L.

GENE INFORMATION

Gene Name	RAB5C RAB5C, member RAS oncogene family [Homo sapiens (human)]
Official Symbol	RAB5C
Synonyms	RABL; L1880; RAB5L; RAB5CL
Gene ID	5878
mRNA Refseq	NM_201434.3
Protein Refseq	NP_958842.1
MIM	604037

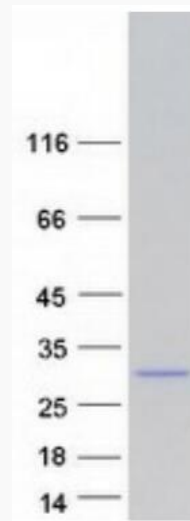
 Tel: 1-631-559-9269 1-516-512-3133

 Email: info@creative-biomart.com  Fax: 1-631-938-8127

 45-1 Ramsey Road, Shirley, NY 11967, USA

UniProt ID

P51148



Coomassie blue staining of purified RAB5C protein.

 Tel: 1-631-559-9269 1-516-512-3133

 Email: info@creative-biomart.com  Fax: 1-631-938-8127

 45-1 Ramsey Road, Shirley, NY 11967, USA