

# Recombinant Human RAB6A Protein, Myc/DDK-tagged, C13 and N15-labeled

**Cat. No.** RAB6A-3000H    **Lot. No.** (See product label)

## SPECIFICATION

<b>Product Overview</b>	RAB6A MS Standard C13 and N15-labeled recombinant protein (NP_942599) with a C-terminal MYC/DDK tag, was expressed in HEK293 cells.
<b>Species</b>	Human
<b>Source</b>	HEK293
<b>Description</b>	This gene encodes a member of the RAB family, which belongs to the small GTPase superfamily. GTPases of the RAB family bind to various effectors to regulate the targeting and fusion of transport carriers to acceptor compartments. This protein is located at the Golgi apparatus, which regulates trafficking in both a retrograde (from early endosomes and Golgi to the endoplasmic reticulum) and an anterograde (from the Golgi to the plasma membrane) directions. Myosin II is an effector of this protein in these processes. This protein is also involved in assembly of human cytomegalovirus (HCMV) by interacting with the cellular protein Bicaudal D1, which interacts with the HCMV virion tegument protein, pp150. Multiple alternatively spliced transcript variants encoding different isoforms have been identified.
<b>Molecular Mass</b>	23.6 kDa
<b>AA Sequence</b>	MSTGGDFGNPLRKFKLVFLGEQSVGKTSLITRFMYDSFDNTYQATIGIDFLSKTMYLE DRTVRLQLWDTAGQERFRSLIPSYIRDSTVAVVVYDITNVNSFQQTTKWIDVDRTER GSDVIIMLVGNKTDLADKRQVSIIEGERKAKELNVMFIETSAKAGYNVKQLFRRVAAA

 Tel: 1-631-559-9269    1-516-512-3133

 Email: [info@creative-biomart.com](mailto:info@creative-biomart.com)     Fax: 1-631-938-8127

 45-1 Ramsey Road, Shirley, NY 11967, USA

LPGMESTQDRSREDMIDIKLEKPQEQPVSEGGCSTRTRPLEQKLISEEDLAANDIL  
DYKDDDDKV

**Purity** > 80% as determined by SDS-PAGE and Coomassie blue staining

**Stability** Stable for 3 months from receipt of products under proper storage and handling conditions.

**Storage** Store at -80 centigrade. Avoid repeated freeze-thaw cycles.

**Concentration** 50 µg/mL as determined by BCA

**Storage Buffer** 100 mM glycine, 25 mM Tris-HCl, pH 7.3.

## GENE INFORMATION

**Gene Name** RAB6A RAB6A, member RAS oncogene family [ Homo sapiens (human) ]

**Official Symbol** RAB6A

**Synonyms** RAB6A; RAB6A, member RAS oncogene family; RAB6; ras-related protein Rab-6A; Rab GTPase; RAB6, member RAS oncogene family;

**Gene ID** 5870

**mRNA Refseq** NM\_198896

**Protein Refseq** NP\_942599

**MIM** 179513

 Tel: 1-631-559-9269 1-516-512-3133

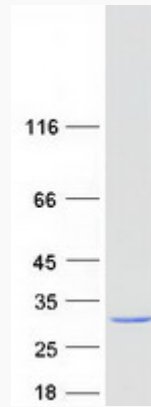
 Email: [info@creative-biomart.com](mailto:info@creative-biomart.com)  Fax: 1-631-938-8127

 45-1 Ramsey Road, Shirley, NY 11967, USA

UniProt ID

P20340

SDS-PAGE



 Tel: 1-631-559-9269 1-516-512-3133

 Email: [info@creative-biomart.com](mailto:info@creative-biomart.com)  Fax: 1-631-938-8127

 45-1 Ramsey Road, Shirley, NY 11967, USA