

Recombinant Human RAB8A Protein, MYC/DDK-tagged, C13 and N15-labeled

Cat. No. RAB8A-037H Lot. No. (See product label)

SPECIFICATION

Product Overview RAB8A MS Standard C13 and N15-labeled recombinant protein (NP_005361) with a C-terminal MYC/DDK tag, was expressed in HEK293 cells.

Species Human

Source HEK293

Description The protein encoded by this gene is a member of the RAS superfamily which are small GTP/GDP-binding proteins with an average size of 200 amino acids. The RAS-related proteins of the RAB/YPT family may play a role in the transport of proteins from the endoplasmic reticulum to the Golgi and the plasma membrane. This protein shares 97%, 96%, and 51% similarity with the dog RAB8, mouse MEL, and mouse YPT1 proteins, respectively and contains the 4 GTP/GDP-binding sites that are present in all the RAS proteins. The putative effector-binding site of this protein is similar to that of the RAB/YPT proteins. However, this protein contains a C-terminal CAAX motif that is characteristic of many RAS superfamily members but which is not found in YPT1 and the majority of RAB proteins. Although this gene was isolated as a transforming gene from a melanoma cell line, no linkage between MEL and malignant melanoma has been demonstrable. This oncogene is located 800 kb distal to MY09B on chromosome 19p13.1.

Molecular Mass 23.7 kDa

 Tel: 1-631-559-9269 1-516-512-3133

 Email: info@creative-biomart.com  Fax: 1-631-938-8127

 45-1 Ramsey Road, Shirley, NY 11967, USA

AA Sequence	MAKTYDYLFKLLIGDSGVGKTCVLF RFSEDAFNSTFISTIGIDFKIRTIELDGKRIKLQI WDTAGQERFRTITTAYYRGAMGIMLVYDITNEKSFDNIRNWIRNIEEHASADVEKMIL GNKCDVNDKRQVSKERGEKLALDYGIKFMETSAKANINVENAFFTLARDIKAKMDKK LEGNPQGSNQG VKITPDQQKRSSFFRCVLLTRTRPLEQKLISEEDLAANDILDYKD DDDKV
Purity	> 80% as determined by SDS-PAGE and Coomassie blue staining
Stability	Stable for 3 months from receipt of products under proper storage and handling conditions.
Storage	Store at -80 centigrade. Avoid repeated freeze-thaw cycles.
Concentration	50 µg/mL as determined by BCA
Storage Buffer	100 mM glycine, 25 mM Tris-HCl, pH 7.3.
GENE INFORMATION	
Gene Name	RAB8A RAB8A, member RAS oncogene family [Homo sapiens (human)]
Official Symbol	RAB8A
Synonyms	RAB8A; RAB8A, member RAS oncogene family; MEL; RAB8; ras-related protein Rab-8A; mel transforming oncogene (RAB8 homolog); mel transforming oncogene (derived from cell line NK14); mel transforming oncogene (derived from cell line NK14)- RAB8 homolog; oncogene c-mel; ras-associated protein RAB8
Gene ID	4218
mRNA Refseq	NM_005370

 Tel: 1-631-559-9269 1-516-512-3133

 Email: info@creative-biomart.com  Fax: 1-631-938-8127

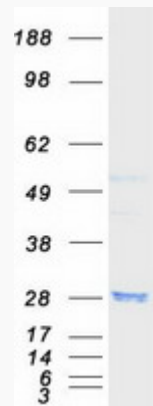
 45-1 Ramsey Road, Shirley, NY 11967, USA

Protein Refseq NP_005361

MIM 165040

UniProt ID P61006

SDS-PAGE



 Tel: 1-631-559-9269 1-516-512-3133

 Email: info@creative-biomart.com  Fax: 1-631-938-8127

 45-1 Ramsey Road, Shirley, NY 11967, USA