

# Recombinant Full Length Human RAB8A Protein, C-Flag-tagged

**Cat. No.** RAB8A-285HFL    **Lot. No.** (See product label)

## SPECIFICATION

### Product Overview

Recombinant Full Length Human RAB8A Protein, fused to Flag-tag at C-terminus, was expressed in Mammalian cells.

### Species

Human

### Source

Mammalian Cells

### Description

The protein encoded by this gene is a member of the RAS superfamily which are small GTP/GDP-binding proteins with an average size of 200 amino acids. The RAS-related proteins of the RAB/YPT family may play a role in the transport of proteins from the endoplasmic reticulum to the Golgi and the plasma membrane. This protein shares 97%, 96%, and 51% similarity with the dog RAB8, mouse MEL, and mouse YPT1 proteins, respectively and contains the 4 GTP/GDP-binding sites that are present in all the RAS proteins. The putative effector-binding site of this protein is similar to that of the RAB/YPT proteins. However, this protein contains a C-terminal CAAX motif that is characteristic of many RAS superfamily members but which is not found in YPT1 and the majority of RAB proteins. Although this gene was isolated as a transforming gene from a melanoma cell line, no linkage between MEL and malignant melanoma has been demonstrable. This oncogene is located 800 kb distal to MY09B on chromosome 19p13.1.

### Form

25 mM Tris HCl, pH 7.3, 100 mM glycine, 10% glycerol.

 Tel: 1-631-559-9269    1-516-512-3133

 Email: [info@creative-biomart.com](mailto:info@creative-biomart.com)     Fax: 1-631-938-8127

 45-1 Ramsey Road, Shirley, NY 11967, USA

<b>Molecular Mass</b>	23.5 kDa
<b>AA Sequence</b>	MAKTYDYLFKLLIGDSGVGKTCVLFSEDAFNSTFISTIGIDFKIRTIELDGKRIKLQI WDTAGQERF RTITTAYYRGAMGIMLVYDITNEKSFDNIRNWIRNIEEHASADVEKMIL GNKCDVNDKRQVSKERGEKLA LDYGIKFMETSAKANINVENAFFTLARDIKAKMDK KLEGNPQGSNQGKVPDQQRSSFFRCVLLTRTRPLEQKLISEEDLAANDILDYK DDDDKV
<b>Purity</b>	> 80% as determined by SDS-PAGE and Coomassie blue staining.
<b>Stability</b>	Stable for 12 months from the date of receipt of the product under proper storage and handling conditions. Avoid repeated freeze-thaw cycles.
<b>Storage</b>	Store at -80 centigrade.
<b>Concentration</b>	>50 ug/mL as determined by microplate BCA method.
<b>Preparation</b>	Recombinant protein was captured through anti-DDK affinity column followed by conventional chromatography steps.
<b>Protein Families</b>	Druggable Genome, Transcription Factors
<b>Full Length</b>	Full L.

## GENE INFORMATION

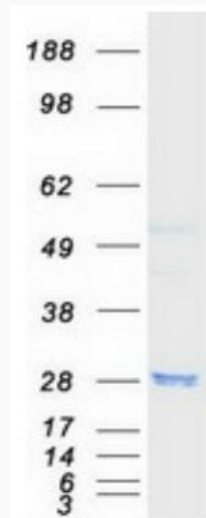
<b>Gene Name</b>	RAB8A RAB8A, member RAS oncogene family [ Homo sapiens (human) ]
<b>Official Symbol</b>	RAB8A
<b>Synonyms</b>	MEL; RAB8

 Tel: 1-631-559-9269 1-516-512-3133

 Email: [info@creative-biomart.com](mailto:info@creative-biomart.com)  Fax: 1-631-938-8127

 45-1 Ramsey Road, Shirley, NY 11967, USA

Gene ID	4218
mRNA Refseq	NM_005370.5
Protein Refseq	NP_005361.2
MIM	165040
UniProt ID	P61006



Coomassie blue staining of purified RAB8A protein.

Tel: 1-631-559-9269 1-516-512-3133

Email: [info@creative-biomart.com](mailto:info@creative-biomart.com) Fax: 1-631-938-8127

45-1 Ramsey Road, Shirley, NY 11967, USA