

Recombinant Human RAB8A Protein, His-tagged

Cat. No. RAB8A-32H Lot. No. (See product label)

SPECIFICATION

Product Overview	Recombinant Human RAB8A Protein(P61006)(91-190 aa), fused with C-terminal His tag, was expressed in E.coli.
Species	Human
Source	E.coli
ProteinLength	91-190 aa
Form	Phosphate buffered saline.
Molecular Mass	13 kDa
AASequence	TNEKSF DNIRNWIRNIEEHASADVEKMILGNKCDVNDKRQVSKERGEKLALDYGIKF METSAKANINVENAFFTLARDIKAKMDKKLEGNSPQGSNQGVK
Storage	Store at -20 to -80°C.
Reconstitution	It is recommended that sterile water be added to the vial to prepare a stock solution of 0.2 ug/ul. Centrifuge the vial at 4°C before opening to recover the entire contents.

GENE INFORMATION

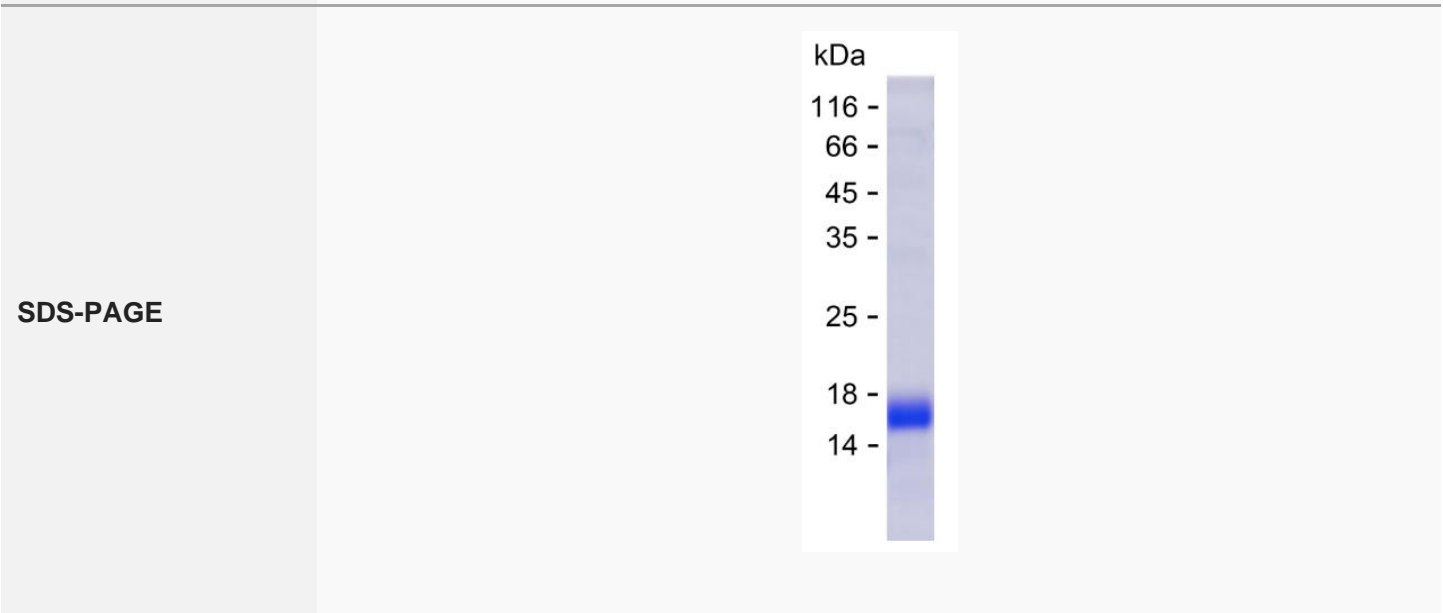
Gene Name	RAB8A RAB8A, member RAS oncogene family [Homo sapiens]
------------------	--

 Tel: 1-631-559-9269 1-516-512-3133

 Email: info@creative-biomart.com  Fax: 1-631-938-8127

 45-1 Ramsey Road, Shirley, NY 11967, USA

Official Symbol	RAB8A
Synonyms	RAB8A; RAB8A, member RAS oncogene family; MEL, mel transforming oncogene (derived from cell line NK14); ras-related protein Rab-8A; RAB8; oncogene c-mel; ras-associated protein RAB8; mel transforming oncogene (RAB8 homolog); mel transforming oncogene (derived from cell line NK14); mel transforming oncogene (derived from cell line NK14)- RAB8 homolog; MEL;
Gene ID	4218
mRNA Refseq	NM_005370
Protein Refseq	NP_005361
MIM	165040
UniProt ID	P61006



 Tel: 1-631-559-9269 1-516-512-3133

 Email: info@creative-biomart.com  Fax: 1-631-938-8127

 45-1 Ramsey Road, Shirley, NY 11967, USA