

Recombinant Human RABEP2 protein, GST-tagged

Cat. No. RABEP2-32H Lot. No. (See product label)

SPECIFICATION

Product Overview	Recombinant Human RABEP2(1 a.a. - 533 a.a.) fused with GST tag at N-terminal was expressed in Wheat Germ.
Species	Human
Source	Wheat Germ
ProteinLength	1-533 a.a.
Description	RABEP2 played an important role in many functions.
Form	50 mM Tris-HCl, 10 mM reduced Glutathione, pH=8.0 in the elution buffer.
Molecular Mass	85.7 kDa
AA Sequence	<p>MAAAPVAADDDERRRRPGAALDSRSQEGANGEAESGELSRLRAELAGALAEME TMKAVAEVSESTKAEVAVAVQRQCQEEVASLQAILKDSISSYEAQITALKQERQQQQ QDCEEKERELGRLKQLLSRAYPLDSLEKQMEKAHEDSEKLRREIVLPMEKEIEELKAK LLRAEELIQEIQRPRRHAPSLHGSTELLPLSRDPSPPLEPLEELSGDGGPAAEFAHN CDDASISSFSLGGGVGSSSSLPQSRQGLSPEQEETASLVSTGTLVPEGIYLPPPGY QLVPTDQWEQLQTEMQVLLAQVQNSEQLLRTLQGTVSQAQERVQLQMAELVTTHK CLHHEVKRLNEENQGLRAEQLPSSAPQGSQQEQGEEESLPSSVPELQQLLCCTRQ EARARLQAQEHGAERLRREIVTLREALEEETVARASLEGQLRVQREETASLCSLRTE MERVQQEQSKAQLPDLLSEQRAKVLRLQAELETSEQVQRDFVRLSQALQVRLERIR QAETLEQVRSIMDEAPLTDVRDIKDT</p>

Tel: 1-631-559-9269 1-516-512-3133

Email: info@creative-biomart.com Fax: 1-631-938-8127

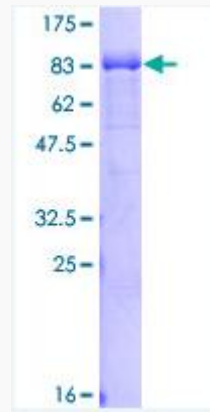
45-1 Ramsey Road, Shirley, NY 11967, USA

Applications	Enzyme-linked Immunoabsorbent Assay; Western Blot (Recombinant protein); Antibody Production; Protein Array
Notes	Best use within three months from the date of receipt of this protein.
Storage	Store at -80 centigrade. Aliquot to avoid repeated freezing and thawing.
GENE INFORMATION	
Gene Name	RABEP2 rabaptin, RAB GTPase binding effector protein 2 [Homo sapiens]
Official Symbol	RABEP2
Synonyms	RABEP2; rabaptin, RAB GTPase binding effector protein 2; rab GTPase-binding effector protein 2; FLJ23282; FRA; rabaptin-5beta; Rabaptin-5 beta;
Gene ID	79874
mRNA Refseq	NM_024816
Protein Refseq	NP_079092
MIM	611869
UniProt ID	Q9H5N1
Chromosome Location	16p12.1
Function	GTPase activator activity; growth factor activity;

 Tel: 1-631-559-9269 1-516-512-3133

 Email: info@creative-biomart.com  Fax: 1-631-938-8127

 45-1 Ramsey Road, Shirley, NY 11967, USA



 Tel: 1-631-559-9269 1-516-512-3133

 Email: info@creative-biomart.com  Fax: 1-631-938-8127

 45-1 Ramsey Road, Shirley, NY 11967, USA