

## Recombinant Human RABIF Protein, Myc/DDK-tagged, C13 and N15-labeled

**Cat. No.** RABIF-5749H    **Lot. No.** (See product label)

### SPECIFICATION

<b>Product Overview</b>	RABIF MS Standard C13 and N15-labeled recombinant protein (NP_002862) with a C-terminal MYC/DDK tag, was expressed in HEK293 cells.
<b>Species</b>	Human
<b>Source</b>	HEK293
<b>Description</b>	This gene encodes a member of the SCE4/YPT1/RAB family of small GTP-binding proteins that are involved in the regulation of intracellular vesicular transport. This protein stimulates GTP-GDP exchange in SEC4, and to a lesser extent in YPT1 and RAB3A, and may play a general role in vesicular transport.
<b>Molecular Mass</b>	13.8 kDa
<b>AA Sequence</b>	MEPAEQPSELVSAEGRNRKAVLCQRCGSRVLQPGTALFSRRQLFLPSMRKKPALS DGSNPDGDLLEHVLVEDMFIFENVGFTKDVGNIKFLVCADCEIGPIGWHLDDKN SFYVALERVSHETRTRPLEQKLISEEDLAANDILDYKDDDDKV
<b>Purity</b>	> 80% as determined by SDS-PAGE and Coomassie blue staining
<b>Stability</b>	Stable for 3 months from receipt of products under proper storage and handling conditions.
<b>Storage</b>	Store at -80 centigrade. Avoid repeated freeze-thaw cycles.

 Tel: 1-631-559-9269    1-516-512-3133

 Email: [info@creative-biomart.com](mailto:info@creative-biomart.com)     Fax: 1-631-938-8127

 45-1 Ramsey Road, Shirley, NY 11967, USA

**Concentration** 50 µg/mL as determined by BCA

**Storage Buffer** 100 mM glycine, 25 mM Tris-HCl, pH 7.3.

## GENE INFORMATION

**Gene Name** RABIF RAB interacting factor [ Homo sapiens (human) ]

**Official Symbol** RABIF

**Synonyms** RABIF; RAB interacting factor; RASGRF3; guanine nucleotide exchange factor MSS4; mss4; rab-interacting factor; mammalian suppressor of SEC4; Ras-specific guanine-releasing factor 3; MSS4; RASGFR3;

**Gene ID** 5877

**mRNA Refseq** NM\_002871

**Protein Refseq** NP\_002862

**MIM** 603417

**UniProt ID** P47224

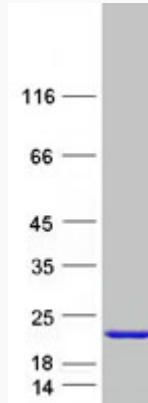
 Tel: 1-631-559-9269 1-516-512-3133

 Email: [info@creative-biomart.com](mailto:info@creative-biomart.com)  Fax: 1-631-938-8127

 45-1 Ramsey Road, Shirley, NY 11967, USA



SDS-PAGE



Tel: 1-631-559-9269 1-516-512-3133

Email: [info@creative-biomart.com](mailto:info@creative-biomart.com) Fax: 1-631-938-8127

45-1 Ramsey Road, Shirley, NY 11967, USA