

Recombinant Full Length Human RAC1 Protein, C-Flag-tagged

Cat. No. RAC1-1105HFL Lot. No. (See product label)

SPECIFICATION

Product Overview	Recombinant Full Length Human RAC1 Protein, fused to Flag-tag at C-terminus, was expressed in Mammalian cells.
Species	Human
Source	Mammalian Cells
Description	The protein encoded by this gene is a GTPase which belongs to the RAS superfamily of small GTP-binding proteins. Members of this superfamily appear to regulate a diverse array of cellular events, including the control of cell growth, cytoskeletal reorganization, and the activation of protein kinases. Two transcript variants encoding different isoforms have been found for this gene.
Form	25 mM Tris HCl, pH 7.3, 100 mM glycine, 10% glycerol.
Molecular Mass	21.3 kDa
AA Sequence	<p>MQAIKCVVVG DGAVGKTCLLISYTTNAFPGEYIPTVFDNYSANVMVDGKPVNLGLWD</p> <p>TAGQEDYDRLRPL SYPQTDVFLICFSLVSPASFENVRAKWYPEVRHHCPNTPILVG</p> <p>TKLDLRDDKDTIEKLKEKLTPIYP</p> <p>QGLAMAKEIGAVKYLECSALTQRGLKTVFDEAIRAVLCPPPVKKRKRKCLLLTRTRPL</p> <p>EQKLISEEDLAANDILDYKDDDDKV</p>
Purity	> 80% as determined by SDS-PAGE and Coomassie blue staining.

 Tel: 1-631-559-9269 1-516-512-3133

 Email: info@creative-biomart.com  Fax: 1-631-938-8127

 45-1 Ramsey Road, Shirley, NY 11967, USA

Stability	Stable for 12 months from the date of receipt of the product under proper storage and handling conditions. Avoid repeated freeze-thaw cycles.
Storage	Store at -80 centigrade.
Concentration	>50 ug/mL as determined by microplate BCA method.
Preparation	Recombinant protein was captured through anti-DDK affinity column followed by conventional chromatography steps.
Protein Families	Druggable Genome
Protein Pathways	Adherens junction, Amyotrophic lateral sclerosis (ALS), Axon guidance, B cell receptor signaling pathway, Chemokine signaling pathway, Colorectal cancer, Epithelial cell signaling in Helicobacter pylori infection, Fc epsilon RI signaling pathway, Fc gamma R-mediated phagocytosis, Focal adhesion, Leukocyte transendothelial migration, MAPK signaling pathway, Natural killer cell mediated cytotoxicity, Neurotrophin signaling pathway, Pancreatic cancer, Pathways in cancer, Regulation of actin cytoskeleton, Renal cell carcinoma, Toll-like receptor signaling pathway, VEGF signaling pathway, Viral myocarditis, Wnt signaling pathway
Full Length	Full L.

GENE INFORMATION

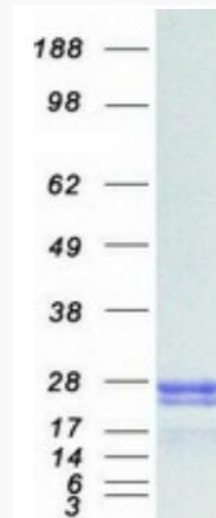
Gene Name	RAC1 Rac family small GTPase 1 [Homo sapiens (human)]
Official Symbol	RAC1
Synonyms	MIG5; MRD48; Rac-1; TC-25; p21-Rac1

 Tel: 1-631-559-9269 1-516-512-3133

 Email: info@creative-biomart.com  Fax: 1-631-938-8127

 45-1 Ramsey Road, Shirley, NY 11967, USA

Gene ID	5879
mRNA Refseq	NM_006908.5
Protein Refseq	NP_008839.2
MIM	602048
UniProt ID	P63000



Coomassie blue staining of purified RAC1 protein.

Tel: 1-631-559-9269 1-516-512-3133

Email: info@creative-biomart.com Fax: 1-631-938-8127

45-1 Ramsey Road, Shirley, NY 11967, USA