

# Recombinant Human RAC1 Protein, Myc/DDK-tagged, C13 and N15-labeled

**Cat. No.** RAC1-5665H    **Lot. No.** (See product label)

## SPECIFICATION

<b>Product Overview</b>	RAC1 MS Standard C13 and N15-labeled recombinant protein (NP_061485) with a C-terminal MYC/DDK tag, was expressed in HEK293 cells.
<b>Species</b>	Human
<b>Source</b>	HEK293
<b>Description</b>	The protein encoded by this gene is a GTPase which belongs to the RAS superfamily of small GTP-binding proteins. Members of this superfamily appear to regulate a diverse array of cellular events, including the control of cell growth, cytoskeletal reorganization, and the activation of protein kinases. Two transcript variants encoding different isoforms have been found for this gene.
<b>Molecular Mass</b>	23.3 kDa
<b>AA Sequence</b>	MQAIKCVVVG DGAVGKTC LLISYTTNAFPGEYIPTVFDNYSANVMVDGKPVNLGLWD TAGQEDYDRLRPLSYPQTVGETYGKDITSRGKDKPIADVFLICFSLVSPASFENVRAK WYPEVRHHCPNTPILVGTKL DLRDDKDTIEKLKEKLTPTYPQGLAMAKEIGAVKYL ECSALTQRGLKTVFDEAIRAVLCPPPVKKRKRKCLLLTRTRPLEQKLISEEDLAANDIL DYKDDDDKV
<b>Purity</b>	> 80% as determined by SDS-PAGE and Coomassie blue staining
<b>Stability</b>	Stable for 3 months from receipt of products under proper storage and handling

 Tel: 1-631-559-9269    1-516-512-3133

 Email: [info@creative-biomart.com](mailto:info@creative-biomart.com)     Fax: 1-631-938-8127

 45-1 Ramsey Road, Shirley, NY 11967, USA

conditions.

**Storage** Store at -80 centigrade. Avoid repeated freeze-thaw cycles.

**Concentration** 50 µg/mL as determined by BCA

**Storage Buffer** 100 mM glycine, 25 mM Tris-HCl, pH 7.3.

## GENE INFORMATION

**Gene Name** [RAC1 Rac family small GTPase 1 \[ Homo sapiens \(human\) \]](#)

**Official Symbol** [RAC1](#)

**Synonyms** RAC1; ras-related C3 botulinum toxin substrate 1 (rho family, small GTP binding protein Rac1); ras-related C3 botulinum toxin substrate 1; p21 Rac1; Rac 1; TC 25; ras-like protein TC25; cell migration-inducing gene 5 protein; MIG5; Rac-1; TC-25; p21-Rac1; MGC111543;

**Gene ID** [5879](#)

**mRNA Refseq** [NM\\_018890](#)

**Protein Refseq** [NP\\_061485](#)

**MIM** [602048](#)

**UniProt ID** [P63000](#)

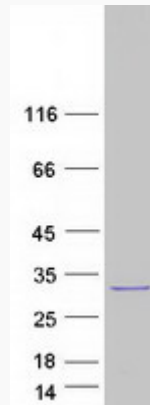
 Tel: 1-631-559-9269 1-516-512-3133

 Email: [info@creative-biomart.com](mailto:info@creative-biomart.com)  Fax: 1-631-938-8127

 45-1 Ramsey Road, Shirley, NY 11967, USA



**SDS-PAGE**



Tel: 1-631-559-9269 1-516-512-3133

Email: [info@creative-biomart.com](mailto:info@creative-biomart.com) Fax: 1-631-938-8127

45-1 Ramsey Road, Shirley, NY 11967, USA