

## Recombinant Human RAC1 protein, His-tagged

Cat. No. RAC1-8511H Lot. No. (See product label)

### SPECIFICATION

<b>Product Overview</b>	Recombinant Human RAC1 protein(P63000-2)(226aa), fused with N-terminal His tag, was expressed in E. coli.
<b>Species</b>	Human
<b>Source</b>	E.coli
<b>Protein Length</b>	226aa(including fusion tag)
<b>Tag</b>	N-His
<b>Form</b>	20mM Tris.Cl, 50mM NaCl, 50% Glycerol, pH8.0.
<b>Molecular Mass</b>	25.4kDa(including fusion tag)
<b>Storage</b>	Store at -80°C and avoid repeated freeze-thaw cycles.
<b>Reconstitution</b>	It is recommended that sterile water be added to the vial to prepare a stock solution of 0.2 ug/ul. Centrifuge the vial at 4°C before opening to recover the entire contents.

### GENE INFORMATION

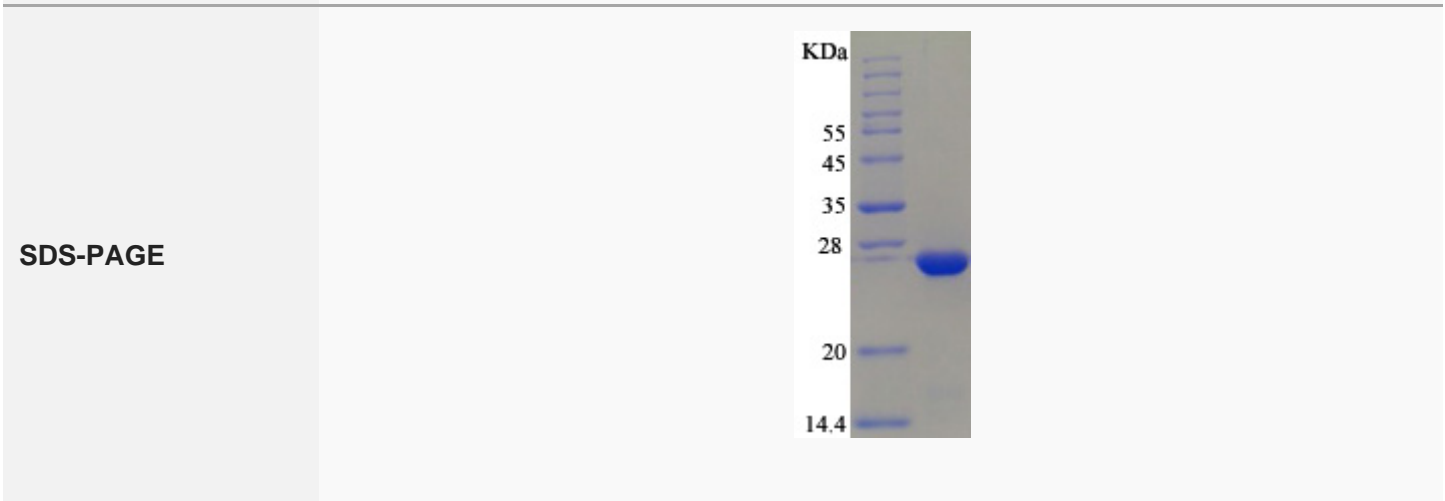
**Gene Name** RAC1 ras-related C3 botulinum toxin substrate 1 (rho family, small GTP binding protein Rac1) [ Homo sapiens ]

 Tel: 1-631-559-9269 1-516-512-3133

 Email: [info@creative-biomart.com](mailto:info@creative-biomart.com)  Fax: 1-631-938-8127

 45-1 Ramsey Road, Shirley, NY 11967, USA

<b>Official Symbol</b>	<a href="#">RAC1</a>
<b>Synonyms</b>	RAC1; ras-related C3 botulinum toxin substrate 1 (rho family, small GTP binding protein Rac1); ras-related C3 botulinum toxin substrate 1; p21 Rac1; Rac 1; TC 25; ras-like protein TC25; cell migration-inducing gene 5 protein; MIG5; Rac-1; TC-25; p21-Rac1; MGC111543;
<b>Gene ID</b>	<a href="#">5879</a>
<b>mRNA Refseq</b>	<a href="#">NM_006908</a>
<b>Protein Refseq</b>	<a href="#">NP_008839</a>
<b>MIM</b>	<a href="#">602048</a>
<b>UniProt ID</b>	<a href="#">P63000</a>



Tel: 1-631-559-9269 1-516-512-3133

Email: [info@creative-biomart.com](mailto:info@creative-biomart.com) Fax: 1-631-938-8127

45-1 Ramsey Road, Shirley, NY 11967, USA