

Recombinant Human Ras-related C3 Botulinum Toxin Substrate 2 (Rho Family, Small GTP Binding Protein Rac2), GST-tagged

Cat. No. RAC2-343H Lot. No. (See product label)

SPECIFICATION

Product Overview	Recombinant GST tagged RAC2 was expressed in E.coli and purified by using conventional chromatography techniques (419 aa, 47 kDa).
Species	Human
Source	E.coli
ProteinLength	1-192 aa
Description	Rac2 is a small signaling G protein (more specifically a GTPase), and is a member of the Rac subfamily of the family Rho family of GTPases. Rac proteins play important roles in multiple cellular events, including actin cytoskeletal organization, cell proliferation and survival, cell cycle progression, and gene transcription regulation.
Formulation	Liquid. In Phosphate Buffered Saline(pH 7.4).
Molecular Weight	47 kDa (419 aa).
Purity	> 90% by SDS – PAGE.
Concentration	1 mg/ml (determined by Bradford assay).

 Tel: 1-631-559-9269 1-516-512-3133

 Email: info@creative-biomart.com  Fax: 1-631-938-8127

 45-1 Ramsey Road, Shirley, NY 11967, USA



Sequence

MSPILGYWKI KGLVQPTRL L LEYLEEKYEE HLYERDEGDK WRNKKFELGL
EFPNLPYYID GDVCLTQSMA IIRYIADKHN MLGGCPKERA EISMLEGAVL
DIRYGVSRIA YSKDFETLKV DFLSKLPEML KMFEDRLCHK TYLNGDHVTH
PDFMLYDALD VVLYMDPMCL DAFPKLVCFK KRIEAIPQID KYLKSSKYIA
WPLQGWQATF GGGDHPPKSD LVPRGSHMQA IKCVVVG DGA VGKTCLLISY
TTNAFPGEYI PTVFDNYSAN VMVDSKPVNL GLWDTAGQED YDRLRPLSYP
QTDVFLICFS LVSPASYENV RAKWFPEVRH HCPSTPIILV GTKLDRDDK
DTIEKLKEKK LAPITYPQGL ALAKEIDSVK YLECSALTQR GLKTVFDEAI
RAVLCPQPTR QQKRACSL

Storage

Can be stored at +4°C short term (1-2 weeks). For long term storage, aliquot and store at -20°C or -70°C. Avoid repeated freezing and thawing cycles.

GENE INFORMATION

Gene Name

[RAC2](#)

Synonyms

RAC2; ras-related C3 botulinum toxin substrate 2 (rho family, small GTP binding protein Rac2); Gx; EN-7; HSPC022; GX; p21-Rac2; Small G protein; ras-related C3 botulinum toxin substrate 2; rho family, small GTP binding protein Rac2; RAC2 ras-related C3 botulinum toxin substrate 2 (rho family, small GTP binding protein Rac2).

Gene ID

[5880](#)

mRNA Refseq

[NM_002872.3](#)

Protein Refseq

[NP_002863.1](#)

MIM

[602049](#)

UniProt ID

[P15153](#)

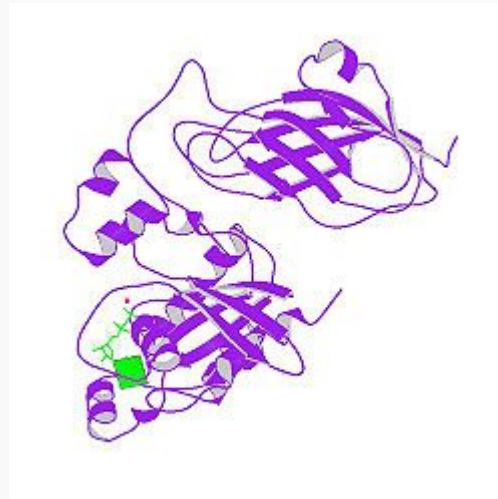
Tel: 1-631-559-9269 1-516-512-3133


Email: info@creative-biomart.com Fax: 1-631-938-8127

45-1 Ramsey Road, Shirley, NY 11967, USA

Chromosome Location	22q13.1
Pathway	Adherens junction; Axon guidance; B cell receptor signaling pathway; Colorectal cancer; Fc epsilon RI signaling pathway; Focal adhesion; Leukocyte transendothelial migration; MAPK signaling pathway; Natural killer cell mediated cytotoxicity; Pancreatic cancer; Regulation of actin cytoskeleton; VEGF signaling pathway; Wnt signaling pathway; Signaling by Rho GTPases.
Function	GTP binding; GTPase activity; nucleotide binding; protein binding.

PDBrendering based on 1ds6. Available structures: 1ds6, 1e96, 1f



 Tel: 1-631-559-9269 1-516-512-3133

 Email: info@creative-biomart.com  Fax: 1-631-938-8127

 45-1 Ramsey Road, Shirley, NY 11967, USA